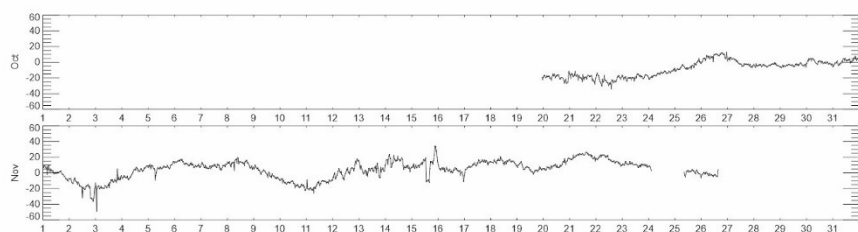
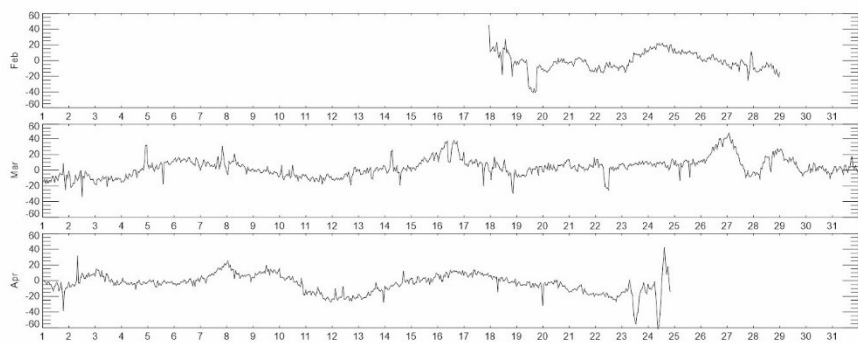


Supplementary Figures of Woodworth and Aarup (2025)

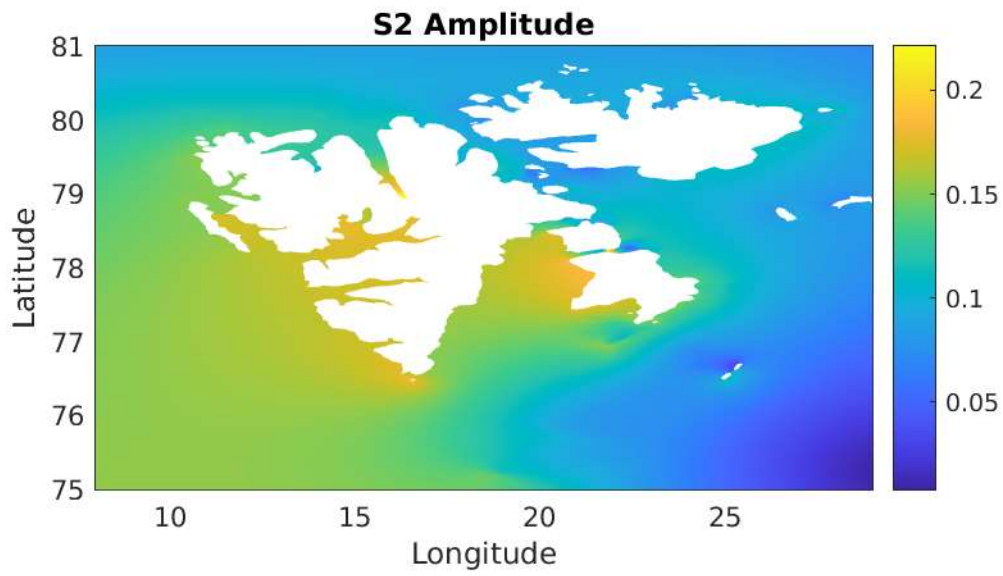


(a)

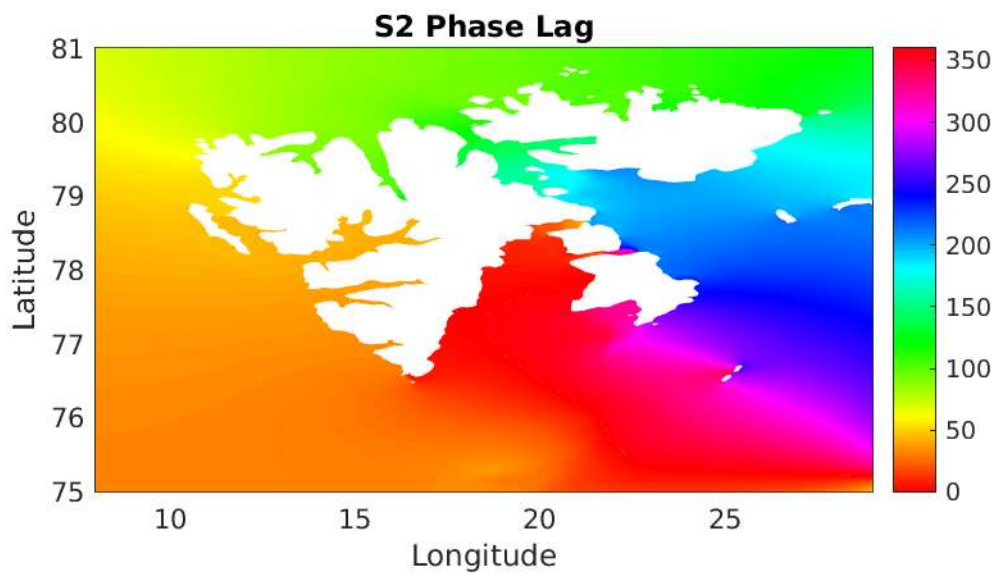


(b)

Supplementary Figure 1: Residuals of the tidal analyses for the data from Mossel Bay in (a) 1892 and (b) 1893. Units are cm.

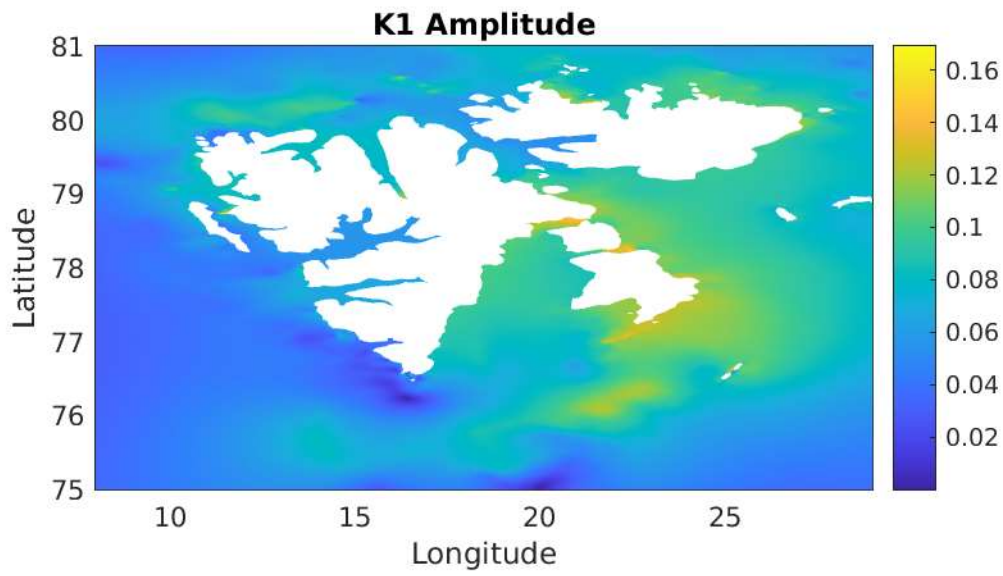


(a)

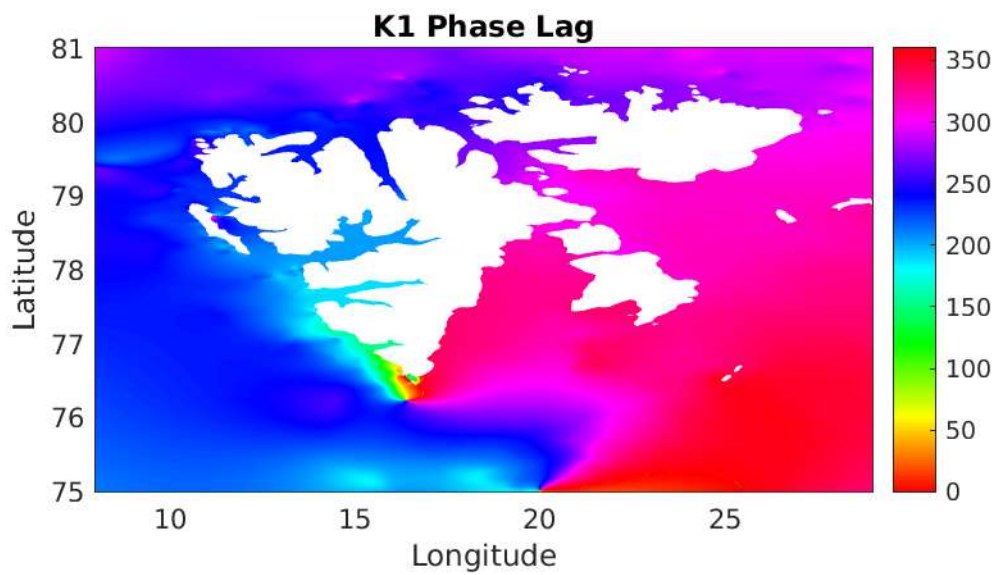


(b)

Supplementary Figure 2: (a) Amplitude (m) and (b) Greenwich phase lag (deg) for S2 around Svalbard from the FES2022b model.

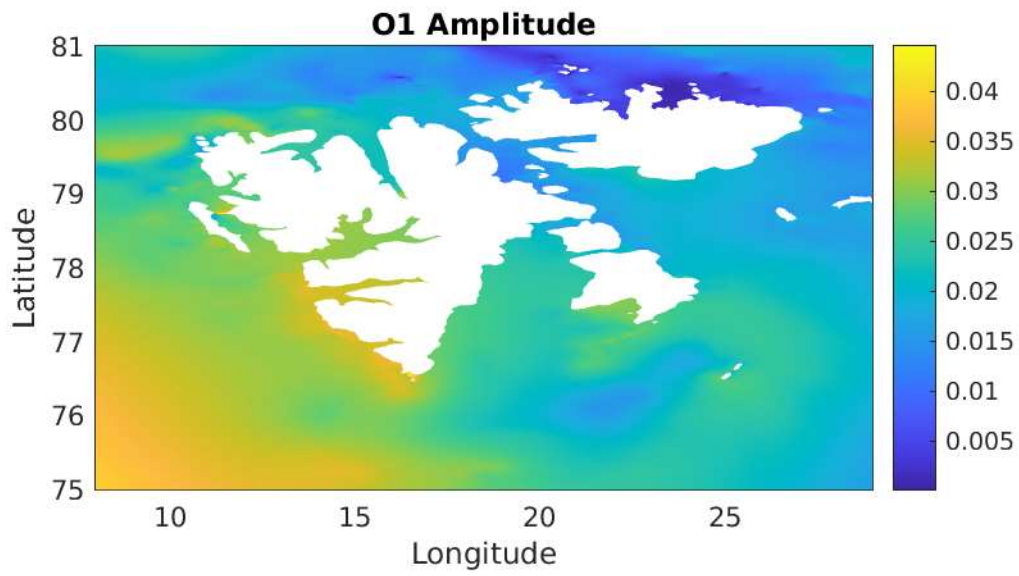


(a)

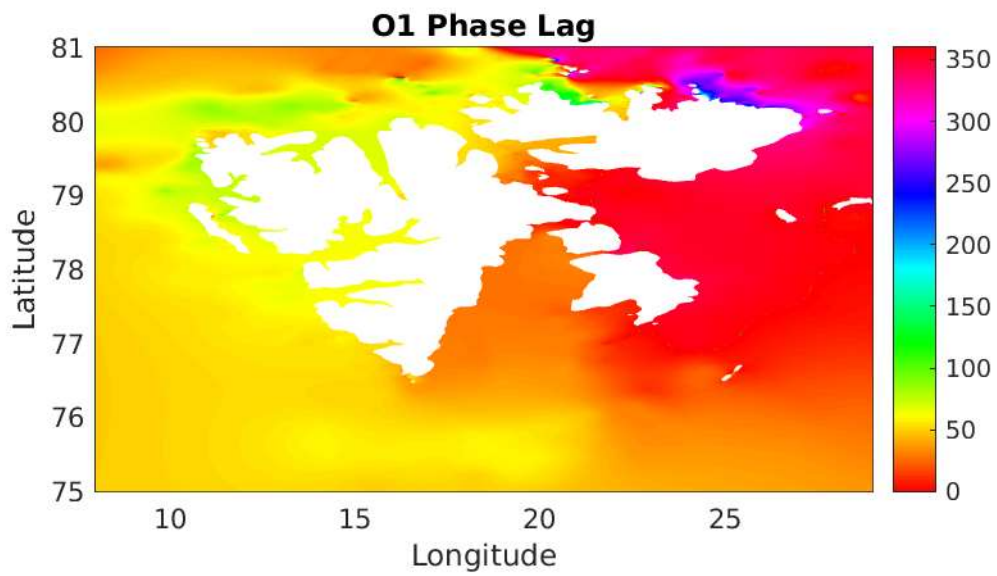


(b)

Supplementary Figure 3: (a) Amplitude (m) and (b) Greenwich phase lag (deg) for K1 around Svalbard from the FES2022b model.



(a)



(b)

Supplementary Figure 4: (a) Amplitude (m) and (b) Greenwich phase lag (deg) for O1 around Svalbard from the FES2022b model.