

HMS Challenger and SMS Gazelle – their 19th century voyages compared

W. John Gould¹

5 ¹Marine Physics and Ocean Climate, National Oceanography Centre, Southampton, SO14 3ZH, UK

Correspondence to: W John Gould (wjg@noc.ac.uk)

Abstract. This paper analyses the pioneering global voyages of HMS *Challenger* and SMS *Gazelle* in the 1870s – a time of rapid scientific advances and technological innovation. The voyage of *Challenger* has become well known as marking the start of the global-scale science of oceanography. The voyage of the *Gazelle* is much less well known despite the two voyages ending in the same year, 1876, and having similar geographical and scientific scope.

10 Rather than focussing on the scientific achievements, the paper concentrates on how the expeditions were planned and executed, the lives and characters of the personnel involved and the underlying motivation behind the voyages. The paper presents the author's translations of key elements of the *Gazelle* reports as a means of introducing the *Gazelle* expedition to an English-speaking readership.

1 Introduction

In spring 1876 two naval vessels anchored in the River Plate in Montevideo, Uruguay, as they returned towards their home ports at the end of their multi-year circumnavigations. (Figure 1). The descriptions of their time in that port recorded in the official narratives differed markedly. That of SMS¹ *Gazelle* (in port, 16-19 February) (Hydrographisches Amt, 1888) comments that they found HMS² *Challenger* (in port 15-25 February) there and reached an agreement that the two vessels would follow different tracks towards Europe; *Gazelle* eastwards on 35°S and then northwards on 25°W, *Challenger* eastwards on 25 38°S and then northwards on 15°W. Surprisingly the official *Challenger* narrative (Tizard et.al., 1885) makes no mention of the encounter with *Gazelle*. It is, however, mentioned in the personal letters of Assistant Steward Joe Matkin (Rehbock, 1992) and on page 194/5 of the travelogue of James Wild, the *Challenger's* official artist (Wild, 1878). The *Challenger* narrative does, however, comment on the cost of beef and sheep meat in Montevideo.

30

¹ Seiner Majestät Schiff (His Majesty's Ship)

² Her Majesty's Ship

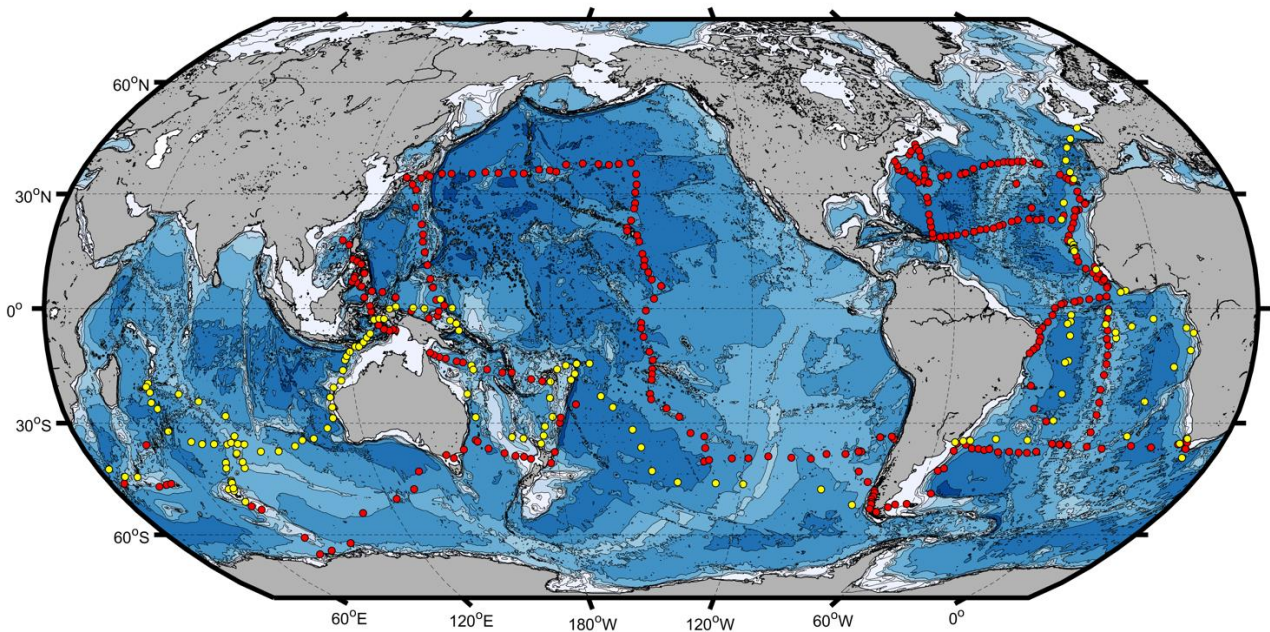


Figure 1: *Challenger* (red) and *Gazelle* (yellow) station positions overlaid on the now-known (ETOP05) ocean bathymetry.

35

This suggests that the two expeditions took rather different approaches to reporting. What were the other differences and the similarities and how did the two expeditions relate to one-another?

2 The historical, scientific and technological context

40 The 1860s and 70s were decades of invention, expansion and change. At sea, steam and sail co-existed, (Harley, 2010), with many ships now powered with both sail and steam-driven screw propulsion using coal-fired boilers. Sail freed them on long voyages from total dependence on widely spaced coaling stations, while steam gave them greater manoeuvrability in light winds and in confined waters.

45 Politically, in Europe the decade started with the Franco-Prussian war declared in July 1870. Prussian forces besieged Paris and the navy of the North German States was blockaded in its home ports by the French fleet. Those navies were in the midst of the transition from sail to steam. In part, the blockade failed because of a shortage of coal supplies for the French. By February 1871 victory was declared by the newly-founded Federal German state.

50

In Britain, 1870 saw the 50 year-old Queen Victoria start the 33rd year of her reign over Great Britain and Ireland and over an empire with a population approaching 300 million spanning the globe. Communication across that empire was still largely by sea using fast mail ships. The building of the Suez Canal, a project led by the French but largely ignored by Britain, shortened passage times between

55 Britain and India. (Bell, 1965)³. Its opening in 1865 was a major event and presented an opportunity for a meeting of the world's maritime powers.

In June 1870 a new era dawned as the final connection was made in a telegraph cable linking Britain to India. (By the mid-1860s transatlantic telegraph messages could be transmitted at 8 words per minute).
60 Laying and maintaining submarine cables brought about a growth in what we now call marine technology. Brunel's ship, the *Great Eastern*, had had an uneconomical life as a transatlantic passenger ship from 1859 to 63 but in 1865 was converted for cable laying, a task she continued to carry out until she was laid up in 1874. Ships with suitable steam powered winches were needed to deploy the submarine cables and to recover them if they failed. Critically, knowledge was needed of ocean depths,
65 not just close to land but along the entire cable routes, and of the nature of the sea bed.

Many years of seafaring had resulted in the accumulation of a great deal of knowledge about the oceans' waves and currents. These were systematically analysed and summarised in Maury's "Physical Geography of the Sea" (Maury, 1855), an initiative perhaps in part stimulated by Benjamin Franklin's
70 study of the Gulf Stream and Timothy Folger's map (Richardson, 1980) published in 1778 and by James Rennell's (Rennell, 1832) posthumously-published study of ocean currents.

Safe access to ports depended on knowledge of the state of the tides and during the 19th century the number of places with systematic tidal observations, mostly in Europe and North America, grew. The
75 understanding of tidal theory increased to the point where a tidal prediction machine could be built by Sir William Thomson in 1872. (Cartwright, 1999).

However, below the surface the oceans remained unexplored and unknown save for the discoveries made on a small number of pioneering voyages, notably the researches of Carpenter, Jeffreys and
80 Wyville Thomson on HMSs *Lightning* and *Porcupine* in 1869 and summarised by Wyville Thomson (1873).

The large-scale understanding of terrestrial geological features was at that time encapsulated in the various works of Charles Lyell between 1830 and 1868, notably his "Principles of Geology" (Lyell,
85 1830-68). The development of the understanding of the terrestrial and coastal flora and fauna had been published in Darwin's *Origin of Species* (Darwin, 1859).

³ See also <https://wavelroom.com/2021/07/16/britain-suez-canal-strategy-1854-1882/> (last access 12 Apr 2022)

Photography was also becoming commonplace and though, in the context of science, it allowed the accurate recording of places and objects, it required cumbersome plate cameras and long exposure times
90 and was not well suited to record activities.

This then sets the scene for two round-the-world voyages of ocean exploration conducted in the 1870s. One, that of HMS *Challenger*, is well known and resulted in an enormous volume of reports and publications together with biological and seabed samples that continue to be analysed. The other, by the
95 German Naval vessel SMS *Gazelle*, is much less known.

3 Preparations and rationale for the voyages

Present-day expeditions with global scope require detailed and extensive planning and the commitment of substantial resources. The same was true in the 1870s. Both of these voyages were carried out using
100 naval vessels indicating national levels of commitment.

3.1 The Naval and organisational context

Before the 1870s there had been very few global scale expeditions and certainly a very small number
105 had a significant scientific component. Most had been aboard British vessels - James Cook, HMS *Endeavour* 1776-81; George Vancouver, HMSs *Discovery* and *Chatham* 1792-5; Matthew Flinders, HMS *Investigator* 1801-3; Robert Fitzroy, HMS *Beagle* 1831-6. Some carried civilian scientists, notably Joseph Banks with Cook and Charles Darwin with Fitzroy.

110 Less well known are the two voyages led by Jules Dumont-d'Urville aboard the French ship *l'Astrolabe* (1826-9 and 1837-40). Both had a Pacific and Australasian focus but the second sought to reach the South Magnetic Pole. (Dumont-d'Urville, 1842-6). The 1857-9 circumnavigation by SMS *Novara* (Scherzer, 1861-3) on behalf of Austro-Hungarian Navy is also little known but it carried 7 scientists and its investigations were guided by Alexander von Humboldt who exhorted them *inter alia* to
115 measure sea temperatures and ocean currents, using drift bottles, and to create bench marks against which sea level change could be measured.

The *Challenger* and *Gazelle* belonged to very different navies. The Royal Navy was long-established and in the 1870s was arguably the sole global sea power, a position encapsulated in the phrase

120 “Britannia Rules the Waves” originating in the 1760s⁴. The Royal Navy also had a long history of its ships carrying out global-scale voyages of exploration. So, the Navy’s role in, and support for, the *Challenger* voyage is unsurprising.

The rationale behind the *Challenger* expedition is summarised in the introduction to Wyville Thomson’s 1878 report on “The Atlantic” (Wyville Thomson, 1878) largely written while *Challenger* was still at sea. The report is dedicated to the Right Honorable G.J. Goschen, M.P.

“ the First Lord of the Admiralty under whose administration the *Challenger* Expedition was organised ”

130 a clear recognition of the scientists’ indebtedness to the Admiralty.

After describing many of the factors already touched on in section 2 of this paper, Wyville Thomson states:

135 “...and finally Dr. Carpenter addressed a letter to the First Lord of the Admiralty, urging the dispatch of a circumnavigating expedition thoroughly equipped, and with a competent scientific staff, to traverse the great ocean basins and prepare sections showing their physical and biological conditions, along certain lines. Dr Carpenter’s letter was referred in due course to the Hydrographer to the Navy, who at once threw himself cordially into the project and prepared a report, which resulted in the Lords of the Admiralty agreeing to the dispatch of such an expedition if the Royal Society recommended it, and provided them with a feasible scheme. A committee was appointed by the Royal Society, and the comprehensive scheme was set up.”

This was to be an unusual arrangement with a fully equipped naval survey vessel carrying out her normal duties as detailed in the sailing instructions issued to her commanding officer, and yet carrying a team of distinguished, civilian scientists each with their own interests and more loosely-defined objectives and with a recognised scientific leader. These potential tensions are alluded to by Wyville Thomson in the Preface (p xii) to (Wyville Thomson, 1878) but, clearly, they did not pose a problem.

150 “The somewhat critical experiment of associating a party of civilians, holding to a certain extent an independent position, with the naval staff of a man-of-war, has for once been successful. Captain Nares and Captain Thomson both fully recognized that the expedition was intended for scientific purposes, and I do not think that in one single case the operations of the combined scientific staff were hampered in the least by a avoidable service routine. All the naval officers, without exception, assisted the civilian staff in every way in their power, and in the most friendly spirit. If I wished anything done I had only to consider who was the man, naval or civilian, who was likely to do it best; and the consequence has been that, with the entire sanction of Captain Nares and Captain Thomson, the parties sent to camp out or detailed for any special service have always been mixed, to the great advantage, I believe, of all concerned”.

⁴ Now best known for its use in Sir Henry Wood’s musical composition, Fantasia on British Sea Songs.

The Imperial German Navy (Kaiserliche Marine), by contrast, had only come into existence after the
160 foundation of German Reich in 1871. It grew out of the Prussian Navy and was headed by General
Albrecht von Stosch (1818-1896) (Hollyday, 2017). (von Stosch did not become an admiral until
1875!).

The personal memoirs of Admiral Alfred von Tirpitz, (von Tirpitz, 1919), provide some context in
165 terms of von Stosch's leadership, the new navy's primary objectives and of the wider political climate.

“Stosch (sic) started from the idea of developing Germany's maritime interests, of strengthening and protecting
“Germandom” and German labour in the world”.

170 “Stosch's increasing endeavour to further Germany's maritime interests in all directions was pursued under great
difficulties from the beginning of his period of office. Foreign service at this time almost overstrained the resources of
the navy. Every commander, however, could reckon upon Stosch's consistent support in his activities abroad, even in
the often independent and difficult decisions which foreign service required as a result of the scarcity of cable
connections. But this was not done without some friction with the Imperial Chancellor.”

175 von Tirpitz remarks that the continuing Prussian influences in Germany's government favoured the
army over the new navy which was seen as being tainted with links to commerce and trade.

180 “As far back as the seventies Stosch was convinced that we must acquire colonies, and that we could not continue in
existence without some means of expansion. He considered that the prosperity of the young Empire would only be
ephemeral if we did not counterbalance the decided disadvantage of our position and history overseas before it was
too late”

“He attached great value to the posting of cruisers to foreign stations, and rightly too in his time”.

185 There is however a clear hint that von Stosch supported the new Navy being technologically and
scientifically advanced.

190 “In the naval academy which Stosch founded at Kiel he inspired the right idea of teaching fewer special subjects, and
promoting general education and independent study. A great deal of mathematics was taught, besides philosophy,
natural and nautical science (regarding which we sent many observations to the museums during our voyages), and
astronomy, which in any case can be reckoned among the special sciences”

von Tirpitz also remarks on the high esteem in which the British (English) Royal Navy was held both in
195 terms of military experience and technical prowess, as the following quotation makes clear.

200 “We grew up on the British navy like a creeping plant. We preferred to get our supplies from England. If an engine
ran smoothly and without a hitch, if a rope or a chain did not break, then it was certain not to be a home-made article,
but a product of English workshops—a rope with the famous red strand of the British navy. In those ships which we
had built ourselves things broke with uncomfortable readiness”.

Remarkably there is a reference to *Gazelle* in the von Tirpitz memoirs, but it does not relate to her round-the world voyage.

205 “It was seldom that the paths of the Prussian Navy crossed those of Prussian politics. When it did happen, it was generally in the way related to us by those who took part in the voyage of the *Gazelle* to Japan in 1864. A German ship had gone ashore in the neighbourhood of Yokohama, and had been looted. The commander of the *Gazelle*, Captain von Bothmer, went thither with a landing party to protect it.”

210 **3.2 Scientific guidance and operational orders**

The *Challenger* voyage came about as a continuation and expansion of the pioneering work aboard HMSs *Lightning* and *Porcupine* and was planned within the technological and political context of the 1870s. It was given strong scientific guidance delivered primarily through the Royal Society and to a
215 lesser extent by deliberations within the British Association for the Advancement of Science. These coalesced into a report by the Royal Society’s Circumnavigation Committee. The Committee was made up of officers and council members of the Royal Society and included Carpenter, Wyville Thomson, Gwyn Jeffreys (an expert on molluscs who had collected samples on HMS *Porcupine*), Capt. Richards (the Admiralty’s Hydrographer), the biologist Thomas Huxley (who came to be known as Darwin’s
220 Bulldog for his advocacy of the theory of evolution), Sir William Thomson (renowned for his work on tides and his innovative work on submarine telegraphy and who had been involved in discussions within the British Association) and the botanist J.D. Hooker.

The Committee’s report, finalised in August 1872, recommended where *Challenger* should go and
225 provided details of the observations that should be made and the manner in which they should be carried out. Interestingly, the report was published by the US Navy (Navy Department, 1872) and so became widely available. The report was also published in *Nature* in the following January, (Anonymous, 1873).

230 Here it is perhaps appropriate to mention just a few striking features of the guidance. First, balance; a single page is devoted to defining the route to be taken, 4 pages to physical observations under the headings of “Temperature (subsurface and surface)”, “Movements of the ocean”, “Tidal observations”, “Bench-marks” ,”Specific gravity” and “Transparency of the water”. Only half a page relates to chemical observations, 5½ pages to Botany and half a page to Zoology. The concluding remarks also
235 encourage the collection of ethnological information in remote communities.

The positioning of the depth sounding and sampling stations is prescribed only generally,

240 “In crossing the great ocean basins observations should be made at stations the positions of which are carefully determined, chosen so far as possible at equal distances, the length of the intervals being of course dependent on circumstances”.

245 “The simple determination of the depths of the ocean at tolerably regular distances throughout the entire voyage is an object of such primary importance that it should be carried out whenever possible, even when circumstances may not admit of dredging, or of anything beyond sounding.”

It is also advised that,

250 “Each station should have a special number associated with it in the regular journal of the day’s proceedings, and that number should be noted prominently on everything connected with that station”.

Interestingly, while it is recommended that the collection of subsurface temperatures should be carried out with thermometers and with “Mr Siemen’s instrument” (see section 6.3), it is implied that the collection of serial information using thermometers would be time-consuming and that compromises in sampling strategy might have to be made.

255 The guidance of the “Circumnavigation Committee” was primarily directed towards the scientific party but, as with all naval voyages, the *Challenger’s* commanding officer was issued with sailing orders indicating where the vessel was to go, what tasks it should undertake and setting the rules under which the vessel should operate. *Challenger’s* sailing orders were issued to the captain and to Professor
260 Wyville Thomson both by the Navy Hydrographer, George Henry Richards, and by Robert Hall, Naval Secretary of the Admiralty. These instructions appear on pages 34 to 40 of Tizard et.al., (1885) and contain the following instruction to Nares.

265 “The main object of the voyage is to investigate the physical conditions of the deep sea throughout the three great ocean basins, that is, to ascertain the depth, temperature, circulation &c., to examine the physical and chemical characteristics of their deposits, and to determine the distribution of organic life, throughout the areas traversed, at the surface, at intermediate depths, and especially at the deep ocean bottoms.

270 As secondary, but by no means unimportant objects are the hydrographical examination of all the unknown or partially explored regions which you may visit, a diligent search for all dangers which may be in or near your track, with a view to expunging them from the charts or definitely determining their positions, a careful series of magnetical and meteorological data, and the observation and record generally of all those oceanic and atmospheric phenomena which, when faithfully recorded, afford the means of compiling practical information of the greatest importance to seamen. Your own experience as the commander of a surveying ship, and the general rules which have been issued
275 from time to time by the hydrographical department for the guidance of Admiralty Surveyors, - copies of which are supplied to you - obviate the necessity of entering into any detailed instructions on this head, and I will only observe that on all the coasts along which you may pass, and at all the ports which you may visit, I shall hope to receive from you such surveys and such complete hydrographical information as circumstances and the time at your disposal may enable you to accomplish

280 If anyone of the various objects of the expedition is more important than another, it may be said to be the accurate determination of the depth of the ocean, for on this must depend many other problems of deep scientific interest”

The route that was to be followed will be discussed later in this paper. However, the part of the sailing
285 orders describing it was prefaced with the following.

290 “The general route which it is proposed the ship should follow is shown on a chart of the world which you are provided with, and although it is possible that it may be found necessary to deviate in some degree from the course there laid down, and that you may not be able to adhere strictly to the dates assigned in these instructions, yet they are to be observed as far as circumstances will admit, and there must be no departure from the general programme without the special sanction of their Lordships.”

The *Challenger* voyage was a major event in the history of the Royal Navy’s Hydrographic Service and in the career of Richards (knighted in 1877 and promoted to the rank of Admiral in 1885) as is
295 remarked in Dawson, (1885).

300 “At the close of 1872, the chief event of Sir George Richards’ official career as hydrographer took place, in the sailing of the *Challenger* on a scientific voyage of three years duration. There is no doubt but that he was the prime mover in that undertaking from start to finish, not only in a scientific sense, owing to his position as one of the Council of the Royal Society, but especially as regards the more practical and less pleasant portion of his official duty, in successfully overcoming any monetary objection raised against its advancement.
In a few remarks made in public, prior to the *Challenger*’s departure, the hydrographer remarked, " that an expedition such as this, which had been the hope and dream of his life, was now on the eve of realization." “

305 The only source of information on *Gazelle* expedition that describes the voyage’s overall purpose can be found in the first volume of the published report (Hydrographisches Amt, 1888) and it is clear that *Gazelle*’s sailing orders were drawn up with due consideration of the orders give to *Challenger*.

However, the opening lines of the Preface⁵ state:

310 “In 1874, SMS *Gazelle* was sent on a two-year voyage, firstly to carry the German expedition destined for the observation of the transit of Venus in December 1874 to the Kerguelen Islands and to take part in these observations, and secondly to promote oceanography and to conduct physical and oceanographic research in the maritime sciences”.

315 The importance of the transit of Venus in defining the early part of the *Gazelle* expedition is a major difference between the two voyages. *Gazelle* was tasked with transporting a team of six astronomers, led by Carl Börgen, and their equipment to the observation site at Betsy Cove on the Island of Kerguelen in the South Indian Ocean (approx. 49°S 69°E). Following the completion of the
320 observations ⁶ the astronomers and their equipment were to be taken to Mauritius from whence they would return to Europe on a commercial vessel and *Gazelle* would continue her circumnavigation. The details of the astronomical observations in Kerguelen are described in (Duerbeck, 2004). A more

⁵ Quotations in English from the *Gazelle* reports are the author’s own translations. The author’s translation of the introduction to the *Gazelle* narrative is appended as additional material to this paper. It is what is referred to as “frei Übersetzung” (free translation) not literally word for word but conveying the meaning.

⁶ A parallel set of observations was made by German astronomers at Tschifu (now Yantai in Shandong Province of PRC). At the time of the transit *Challenger* was undergoing a long stay and refit in Hong Kong.

personal account attributed to one of them, Ladislaus Weinek, is given in (Davoust, 1999). No further description of that astronomical work is given here.

325

The overall scientific rationale for the *Gazelle's* oceanographic and geophysical observations is similar to that given for the *Challenger* voyage and indeed refers to her voyage which had set off 18 months before *Gazelle*. The rationale for the *Gazelle's* work is also set in the context of Maury's promotion of the collection of systematic observations as follows

330

“Only at the beginning of the (18) fifties did a new area of systematic exploration of the seas begin on a strictly scientific basis. MAURY, the director of the National Observatory in Washington, deserves the credit for giving the first impetus to this and for having applied a systematic approach. After collecting oceanic and meteorological observations made by American seafarers between 1840 and 1850, he designed schemes to achieve a uniform observation system, which was given to the American ships to record their observations which were then returned to the central office after the voyage and analysed. Furthermore, following his suggestion, the government of the United States requested other seafaring nations to develop and participate in oceanic and maritime-meteorological research. They were invited to a conference in Brussels in August 1853, at which the first agreements on this were made.

335

340

MAURY's efforts were particularly encouraged by the need for cable-laying overseas, which arises from the trade and transport conditions of the new era, and which in turn requires precise knowledge of the depths of the sea, the nature of the seabed and other physical properties of the ocean.”

Three sets of sailing orders (dated 3 June and 13 November 1874 and 23 June 1875) were issued by the head of the Imperial German Navy, Admiral Albrecht von Stosch.

345

It is clear from these orders that the German Admiralty was monitoring *Challenger's* progress as there are references to it in the First sailing orders

350

“After leaving Kiel, after the coal has been replenished in Plymouth if necessary, you should choose the course so that it starts from the latitude of the Azores almost halfway between the course of the English ship "*Challenger*" and the European-African coast, then to pass Madeira and the Canary Islands in the west and, if necessary, - to call at the Cape Verde Islands to refill coal”.

355

“The most recent work by HMS "*Challenger*" in the North and South Atlantic Oceans gives clues for deciding the importance of the positions with regard to these observations. There is a copy of the report on this work up to the Cape of Good Hope on board SMS "*Gazelle*", from which the main sounding positions can be taken, and since comparison observations relating to the earlier American work are also included in this report, so it offers the clues for the decision of the expediency of the observation for certain stretches”.

360

And in the Third Instructions

365

“Consideration is also given to the soundings along the line which HMS "*Challenger*", which has recently been active in the western part of the Pacific Ocean and will continue to do so in the northern and western parts in the near future, as well as on the routes and areas already worked by the "*Gazelle*".

There follow detailed instructions relating to *Gazelle* making observations to complement those made by *Challenger* in the Pacific around the Kermadec Islands, Tonga and Fiji.

370 The overall rationale for the voyage and the constraints within which *Gazelle* operated are summarised in an early paragraph

375 “By the highest cabinet order of March 10th this year S.M.S. *Gazelle* is commissioned for scientific purposes, and the corvette has been given special equipment for this purpose. In order to gain space, the guns have been reduced to eight and the crew has been reduced. Nevertheless, S.M.S. *Gazelle* must retain the character of a warship and I expect that, Your Excellency, the conventions of managing the ship will always be maintained, even under the given circumstances”

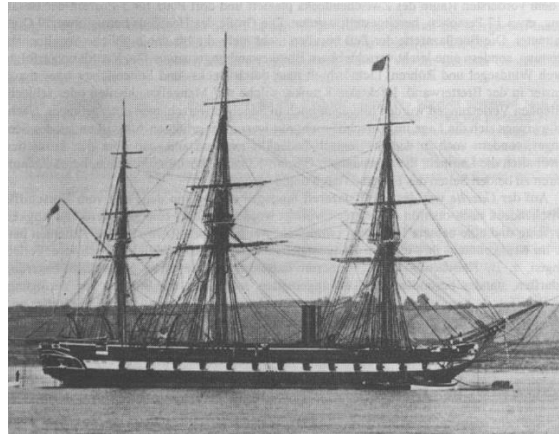
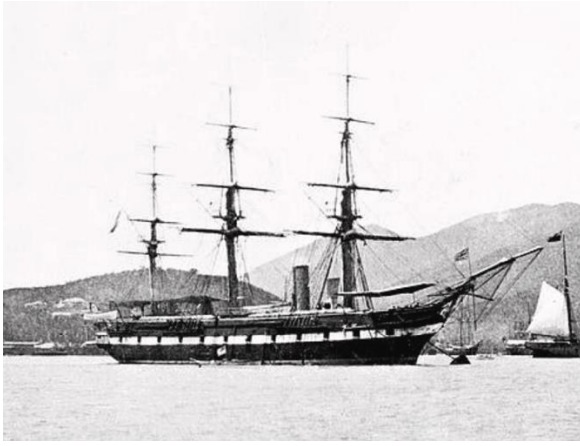
380 Shortly thereafter there is a reference to a visit by *Gazelle* to the River Congo and to Loanda (Luanda, Angola).

385 “You will find the German expedition to explore Central Africa on the Loanda coast. The appearance of the “*Gazelle*” there will increase the reputation of the expedition among the population and can be of advantage for their work. A further purpose should by no means be connected with the visit to this coast, and your Excellency must avoid any demonstration which could give the inhabitants the impression that you are pursuing political aims”.

This must refer to the Loango Expedition (1873-6) (Güssfeldt et.al., 1888). The report of that expedition refers to observations by SMS *Gazelle* being used to confirm the expeditions’ magnetic observations. This wording of sailing instructions hints, perhaps, that the voyage may also have had an underlying
390 “show the flag” purpose on behalf of the newly-founded German state and its navy but that they were trying not to give that impression.

4. The ships

Both *Challenger* and *Gazelle* were mid-sized warships, each with both sails and steam propulsion. Sails were used primarily on passage and steam propulsion, (Sennett and Oram, 1899), was available for
395 holding position when making observations. Both ships had already spent considerable time far from their home countries. *Challenger* had been flagship of the Australia station from 1866 to 1870 and *Gazelle* had been sent to Japan in 1864 on a somewhat political mission to protect a German ship that had been wrecked near Yokohama (von Tirpitz, 1919). Their visual similarity (Figure 2) is striking, though *Challenger* appears to have a higher freeboard than *Gazelle*.



400

Figure 2: Left. HMS *Challenger* in St Thomas, West Indies, March 1873. (Archives of the Natural History Museum, London). Right. SMS *Gazelle*. (Archives of Marineschule Mürwik, Germany).

Challenger was a Pearl class corvette⁷ – a class described by Winfield (2014) as follows

405

“These “open battery” corvettes mounted all their guns on an exposed weather deck but as in 18th-century frigates there was a complete unarmed deck below this provided plenty of berthing space and led to the description of the ships as troop frigates because they could transport soldiers when required”

410 Thus, it seems *Challenger* was ideally suited for modification for her new role.

Gazelle was an Arcona Class frigate described at the beginning of Chapter II of (Hydrographisches Amt, 1885) as follows

415

“S.M.S. “*Gazelle*”, although not one of the very latest ships of the Imperial Navy, was one of the best and most suitable vehicles for the purposes of the expedition in terms of space and size, in terms of facilities and sea characteristics. Built entirely from wood, it belonged to the class of “covered corvettes”, now called cruiser frigates, and as such offered a spacious, airy and light deck below the upper deck, the battery, which was intended for the placement of the guns. Being protected from sun and rain it was, suitable for scientific work, for setting up work and living rooms”.

420

Both ships required modification to prepare them for their multi-year voyages and for the changes from their normal naval duties. As noted, their standard pre-expedition armaments were reduced, more substantially in the case of *Challenger*, perhaps reflecting the exhortation in *Gazelle*’s first sailing orders that she “must retain the character of a warship”.

425

The complements of both ships were reduced, but the *Gazelle*’s from a much higher original figure suggesting *Gazelle* would have been much more crowded.

430

⁷ A Frigate was defined as a ship with a single gun deck immediately below the main deck. A corvette was of similar size but the guns were mounted on the main deck.

	HMS Challenger	SMS Gazelle
Vessel type	Pearl class corvette ⁸ Second of class	Arcona class covered frigate ⁹ Second of class
Date Launched/Commissioned	Chatham, Feb 13 1858/ May 6 1861	Danzig (Gdansk), Dec 19 1859 / Kiel, May 15 1862
Length (LOA)/ Beam/Draught (m)	68.7 / 12.3 / 5.7	72.0 / 13.0 / 6.5
Displacement	2,137 tons	2,391 tons
Rig	Full rig, 3 mast 1,500m ²	Full rig, 3 mast, 2,200m ²
Propulsion ¹⁰	Two cylinder trunk engine 1450 HP 2 blade screw	Single expansion steam engine 1320 HP 2 blade screw
Range/speed under steam	??@10.7kts	1,150 nm @11kts
Complement as commissioned:	290	390
Expedition initial complement	233 (175 naval personnel, 50 boys ¹¹ , 6 scientists, 1 lab assistant, 1 domestic servant) ¹²	338 (officers , crew and 1 scientist)
Armament as commissioned:	2 x 8" 1 x 68lb (10")	28 x 68 pounder
Expedition armament	2x 68lb	8

Table 1: The principal characteristics of HMS *Challenger* and SMS *Gazelle*

4.1 The commanding officers

435

The Captains of both ships were experienced naval officers. George Nares, the sixth child of a naval officer, was 41 years of age when *Challenger* sailed. He already had experience of expedition work, having sailed as second mate aboard HMS *Resolute* on the 1852-4 Arctic search for the missing Franklin expedition. Prior to his appointment to *Challenger* he had served for 5 years as a surveyor on the east coast of Australia and later in the Mediterranean. He was promoted to the rank of Captain in 1869 and his appointment to the command of HMS *Challenger* followed his involvement in oceanography in the Gulf of Suez and in the Straits of Gibraltar (Carpenter, 1870).¹³

440

He, together with Lieutenant Pelham Aldrich, left *Challenger* when she reached Hong Kong in December 1874 so that he could take up his appointment to command the British Arctic Expedition (1875/6) aboard HMSs *Discovery* and *Alert*. Pelham Aldrich was replaced in Hong Kong by Lieutenant Carpenter.

445

⁸ Winfield, 2014

⁹ <https://second.wiki/wiki/arcona-klasse> Last access 6 June 2022

¹⁰ Sennett and Oram, 1899

¹¹ The Royal Navy accepted boy sailors with a minimum age of 15. See Smith, 2021

¹² Rice (2001)

¹³ Nares' 9 year old son, William Grant Nares, embarked on the voyage. *Challenger* carried a schoolmaster, Adam Ebbels, to help with the crew's education but he died at sea and was buried in Bermuda. His replacement joined in Simonstown. William returned to the UK from South Africa.

450 Nares' successor aboard *Challenger* was 44 year old Captain Frank Tourle Thomson, who had not had the expeditionary experience of Nares but who, nonetheless, went on to co-author many of the *Challenger* narrative reports. He became commander of the Royal Yacht *Victoria and Albert* from May 1877 until October 1884, the year in which he died aged 54.



455 **Figure 3:** The Commanders of the round-the-world voyages Left Kapitän zur See von Schleinitz (photo dated 1890) (http://www.tripota.uni-trier.de/single_picture.php?signatur=385_1275 Last access 9 Apr 2022) Right. George Nares (1872-4). (Archives of the National Portrait Gallery, London), Francis Tourle Thomson (1874-6). (Courtesy of Mary Evans Picture Library).

460 The captain of SMS *Gazelle*, Georg von Schleinitz ¹⁴ had joined the Prussian Navy in 1845 at the age of eleven. He had experience of working far from Europe as a flag lieutenant on the Prussian expedition to China, Japan and Siam between 1860 and 1862. In 1864 he was first officer on the covered corvette *Arcona*, sister ship of the *Gazelle*.

465 In 1869 von Schleinitz became a corvette captain on *Arcona* and in summer 1874 he took command of *Gazelle*.

470 The fact that both Nares and von Schleinitz were naval surveyors led to them both being at the ceremony to open the Suez canal on November 17th, 1869; von Schleinitz as Commander of the *Arcona*,

¹⁴ <https://adb.anu.edu.au/biography/schleinitz-georg-gustav-freiherr-von-4542> (Last access 6 June 2022)

https://second.wiki/wiki/georg_von_schleinitz (Last access 12 Apr 2022)

Nares as commander of the HMS *Newport*, a vessel that was involved in hydrographic surveying in the Mediterranean.

At the opening, Nares, contrived to make HMS *Newport* the first ship to transit the canal from North to South, ahead of the intended first vessel, the French Imperial yacht *l'Aigle*, carrying Empress Eugenie. Though officially reprimanded for this breach of protocol, Nares undoubtedly gained some kudos from this manoeuvre and it seems unlikely that von Schleinitz would have been unaware of the incident.

4.2 Ships' officers

480

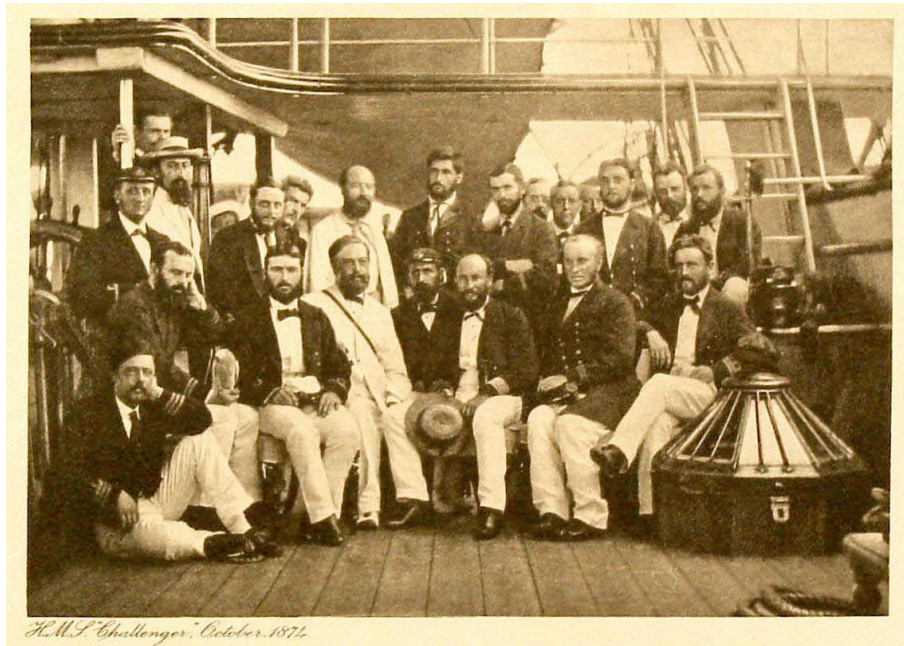
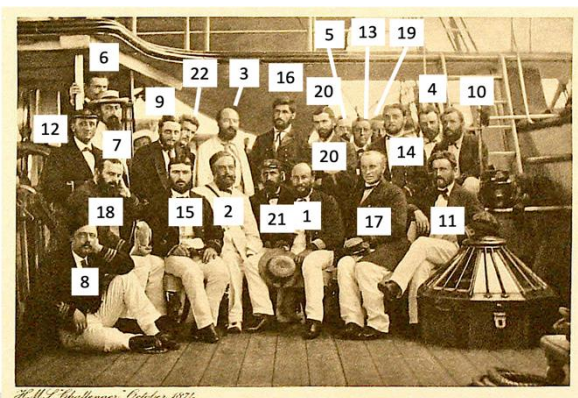


Figure 4: A group photograph of the *Challenger*'s Officers and scientists. (Courtesy of the Archives of the Natural History Museum).

485

Though they were unidentified in the *Challenger* reports they were identified by Rice (1986) as follows



1. Nares, 2. Wyville Thomson, 3. Wild, 4. Murray, 5. Moseley, 6. Willemoes-Suhm, 7. Buchanan, 8. Cdr. Maclear, 9. Lt. Aldrich. 10. Lt. Bromley. 11. Lt. Bethel, 12. Sub-Lt. Balfour, 13. Sub-Lt. Channer, 14. Sub-Lt. Harston, 15. Nav. Sub-Lt. Havergal, 16. Nav. Sub-Lt. Swire, 17. Staff Surgeon Crosbie, 18. Surgeon Maclean, 19. Paymaster Richards, 20. Ass. Paymaster Hynes, 21. Engineer Spry, 22. Ass. Engineer Howlett.

Absent from this photograph were Chief Engineer James Ferguson, Engineer Allen, Sub Lt. Sloggett, Asst. Engineer Abbott.

500

The following are short biographies of some of *Challenger's* officers.

Second in command to Nares and Thomson was Commander John Fiot Lee Pearse Maclear. He was 34 years old and was the second son of Sir Thomas Maclear who in 1833 had been appointed Her
505 Majesty's Astronomer at the Cape of Good Hope. John Maclear joined the navy as a 13 year old cadet, with much of his Naval career being spent in foreign waters. After his return from *Challenger* in 1878 John Maclear married Julia, a daughter of the eminent astronomer Sir John Herschel.

Lieutenant Pelham Aldrich, was 28 when he joined *Challenger*. He had joined the Royal Navy as a 15
510 year-old cadet in 1859 and served aboard ships in the Pacific and Mediterranean before his service in *Challenger*. He left the vessel in Hong Kong to accompany Nares on the British Arctic Expedition on which he led the sled party to Ellesmere Island. His naval career ended with his appointment with rank of Rear Admiral and later Vice Admiral as the Superintendent of Portsmouth Dockyard (1899-1903). He died in 1930 aged 86.

515

Lieutenant Arthur C B Bromley was born 16 Sept 1847 and entered the Navy as a cadet 1860. He was 25 when he joined *Challenger*. His career ended (rank of Vice Admiral) in 1905 with him as Superintendent of the dockyard in Malta. He died 25 October 1909¹⁵.

520 Lieutenant George R Bethell was a Yorkshireman, born in 1849 and was 23 when he joined *Challenger*. Compared with his fellow officers his naval career was short. In 1885, with the rank of Commander he stood for parliament and was elected for the Yorkshire constituency of Holderness, a position he held until 1900 when he lost the seat over his views on the government's policy on South Africa. He died in 1919.

525

Arguably the ship's officer who had the greatest influence on the scientific work of *Challenger* was Thomas Tizard. He had entered the Royal Navy by competitive examination in 1854 (aged 15) and six years later started his career as a surveyor in the Mediterranean and was aboard HMS *Newport* with Nares at the opening of the Suez canal in 1869. He was navigator and chief surveyor aboard *Challenger*
530 and was responsible for the current measurements – he had earlier experience of researching currents in the Straits of Gibraltar. As the obituary in the *Geographical Journal* (A.M.F., 1924) comments

“...his duties involved the closest associations with the leader of the expedition and of the scientific staff in decisions bearing on the carrying out of the objectives of the expedition. From the outset he closely identified himself with

¹⁵ Times archive 27 October 1909

535 every undertaking with which the expedition was concerned. As time went on, the influence he exerted was increasingly apparent...”.

When Nares left *Challenger* in 1875 it was clear that Tizard who was identified by Wyville Thomson as the “chief of the naval scientific staff” (Wyville Thomson, 1878), had become indispensable to the
540 continuity, and presumably the success, of the voyage’s work.

After the *Challenger* voyage, the Admiralty seconded him to work with John Murray on the compilation and publication of the narrative and of the oceanographical and hydrographical results. In 1891 he was elected a Fellow of the Royal Society.

545 *Gazelle*’s officers are listed as follows in Volume 1 of the narrative – their ranks are those while aboard *Gazelle*, though many were later promoted.

Captain zur See¹⁶, Baron von Schleinitz as Commandant,

550 Lieutenant Captain, Dietert as First Officer.

Lieutenant Captain, Jeschke as Navigational Officer,

Lieutenant Captain, Bendemann,

Lieutenant zur See, Strauch,

Lieutenant zur See, Rittmeyer,

555 Sub-lieutenant zur See, von Ahlefeld,

Sub-lieutenant zur See, Wachenhusen,

Sub-lieutenant zur See, Credner,

Sub-lieutenant zur See, Breusing,

Sub-lieutenant zur See, von Seelhorst,

560 Sub-Lieutenant zur See, Zeye,

Navy medical officer, Dr Naumann,

Marine assistant doctor, Dr Huesker,

Navy underpaid master, Lindenberg,

565 Their responsibilities for the scientific work were also listed in the narrative of the voyage and the following are some biographical details.

¹⁶ The term “zur See” was used in the Imperial German Navy to distinguish the ranks from the equivalent ones in the Army

Lieutenant Captain Conrad Dietert (05 Oct 1844 - 15 Sep 1906), was the First Officer under von Schleinitz but does not appear to have had any scientific responsibilities.

570

Lieutenant (Rudolf?) Rittmeyer and Sub Lt. Conrad von Seelhorst (5 Apr 1853 – 6 Jul 1930)¹⁷ were responsible for the meteorological observations and for astronomy. Though it is not specified in the reports, we might speculate that the astronomical work could have involved support of the astronomers who observed the transit of Venus as well as including any other astronomical phenomena observed during the voyage (aurora australis, meteor showers), (Sperberg, 2021). The sailing orders also state

575

“In addition to frequent observations of lunar distances, investigations are also to be carried out on the possibility of successfully using star sights, the eclipses of Jupiter's moon, etc. for the purpose of deriving the geographical longitude, and this is to be reported on later”.

580

von Seelhorst was invalided out of the Navy in 1878 with a serious lung condition but went on to have an academic career in agriculture in Göttingen.

Captain Lieutenant Jeschke, Lieutenants zur See Breusing and Zeye were responsible for navigation as it related to surveying, sounding (but not including deep sea sounding), documenting coastlines, sailing instructions, as well as the astronomical and magnetic observations.

585

Lieutenant Captain Felix von Bendemann (8 Aug 1848 – 31 Oct 1915)¹⁸ and Lieutenant Wachenhusen were responsible for the oceanographic measurements, such as deep-sea soundings, temperature and specific gravity measurements, determining the chemical composition of sea water and observations of currents and tides. Bendemann had been one of the first graduates of the new naval academy in Kiel.

590

Lieutenant Franz Strauch (11 Apr 1846 – 12 Aug 1928)¹⁹ was primarily responsible for the ethnological work. He had joined the Prussian Navy as a cadet in 1864. His interests in ethnology continued after the *Gazelle* voyage and he became a link between the (Imperial) Navy and the Ethnological Museum in Berlin. The relationship between the Navy and ethnology is revealed in Zimmerman (2001).

595

“The Navy’s collecting duties developed from an occasional activity for officers during their leisure time to an integral part of its operations. In 1874 Bastian persuaded the Navy to order the surveying ship SMS *Gazelle* bound for the South Pacific, to acquire “everything collectible” from ports of call. A lieutenant Franz Strauch assigned to the *Gazelle* did much ethnographic collecting for the museum and developed a lifelong interest in anthropology. He eventually rose to the rank of Rear-Admiral and acted as a key intermediary between the Navy and the Museum of ethnology.”

600

¹⁷ https://de.wikipedia.org/wiki/Conrad_von_Seelhorst Last access 6 June 2022.

¹⁸ https://wp-de.wikideck.com/Felix_von_Bendemann Last access 6 June 2022.

¹⁹ https://second.wiki/wiki/franz_strauch Last access 6 June 2022.

605 Zimmerman comments that the close relationship between the Navy and the Museum continued into the 20th century.

Lieutenant Hunold von Ahefeld (5 Mar 1851 – 5 Sept 1919)²⁰ was responsible for gravity measurements (Pendel Beobachtungen) and for topography. He had joined the Prussian Navy as a cadet
610 in 1867 and after his service on *Gazelle* he became involved with naval shipyards before retiring in 1907. In his work he was assisted by Lieutenant Credner.

The ship carried two medical officers, Dr. Neumann and Dr. Huesker. Neumann assisted with the botany while Huesker did the geological and anthropological research.

615

4.3 The scientists who joined the voyages

Much has already been written about the *Challenger's* six scientists (Aitken and Foulc, 2019) and so they will be described only briefly here.

620

Charles Wyville Thomson was leader of the scientific party and was 42 when *Challenger* sailed. He was a Scot, born in Linlithgow a few miles east of Edinburgh 5 March 1830. He was christened Wyville Thomas Charles Thomson (he appears as Wyville Charles Thomson in the 1881 census records) but apparently changed his name to Charles Wyville Thomson in 1876 when he was knighted. This is the
625 name by which he is now known and which appears in all the *Challenger* reports.

According to Anonymous (1876), he left school in 1845 and spent the next 3 years studying medicine at Edinburgh University, following in the footsteps of his father, a surgeon with the East India Company. His intense studies affected his health and, as an easier option, in 1850 he began lecturing in botany at
630 the University of Aberdeen which conferred on him a Doctor of Laws (LL.D.) degree. He married Jane Dawson in 1854 and their son Frank was born in 1860. Until he assumed responsibility for the scientific work of HMS *Challenger* in 1872, he had broadened his scientific interests into chemistry, mineralogy, palaeontology and zoology holding academic positions in Cork, Belfast and Edinburgh. His interests also grew in wider educational matters, in the arts and in local politics and law.

635

Perhaps the spark that led to the *Challenger* voyage lay in a discussion between Wyville Thomson and Carpenter in 1868 when Wyville Thomson suggested that the deep-sea floor would be a rich hunting

²⁰ https://second.wiki/wiki/hunold_von_ahlefeld Last access 6 June 2022.

ground for naturalists. He urged Carpenter to use his influence to mount an expedition and this he did in a letter to the President of the Royal Society as documented in Wyville Thomson, 1873.

640

John Young Buchanan was the expedition's chemist and took responsibility also for the physical measurements (water temperature and specific gravity) except those such as meteorological measurements, that were the responsibility of the ship's officers. He was also an accomplished mineralogist. Born, 20 Feb 1844 he was the second son of a well-to-do Glasgow family and was 28 at the start of the voyage. In 1863 he graduated with an arts degree from Glasgow University before studying chemistry in Germany at Marburg, Bonn and then Leipzig before moving to Paris. He returned to Scotland around 1870 as assistant to the Professor of Chemistry at the University of Edinburgh, Alexander Crum Brown. So, he came to the *Challenger* expedition as someone who was already widely travelled and with eclectic interests.

650

Henry Nottidge Moseley was born in Wandsworth in South London, 14th November 1844 and so was 28 when he joined *Challenger*. The most complete description of his life is to be found in a memoir by the zoologist Gilbert Bourne (Bourne, 1892) as an introduction to Moseley's narrative of the *Challenger* voyage. His father, also Henry, as well as being a clergyman, was an eminent mathematician and a fellow of the Royal Society. Henry N. was educated at Harrow School and then at Exeter College, Oxford, (1864-8) graduating with a First Class degree in Natural Sciences, though the initial intention had been for him study mathematics or classics. The move to science was prompted by his interest in natural history as a hobby that started when he was at school and continued in Oxford. After graduation he was awarded a travelling fellowship that took him in 1868 to work in Vienna. He then enrolled as a medical student in London but returned to the continent in 1871 to work in Leipzig. On his return to London in autumn that year he was invited to join the British Government's Eclipse Expedition to Ceylon (Sri Lanka), (total solar eclipse, 12 December), on which he acted both as a naturalist and took part in the astronomical observations²¹. So, by the time he was selected to join *Challenger*, he was already well travelled and had wide scientific interests and experience. His scientific character is perhaps revealed by this comment by Tizard.

665

“Whenever they arrived at a new place Moseley would ask his colleagues what they intended to work at so that he might undertake what they did not care for. His anxiety was that the whole ground should be covered, and he was willing to leave all the more apparently interesting work to others reserving for himself what they rejected. It came about that he did more work than anybody else on the expedition though his friend von Willemoes-Suhm might have run close had he survived.”

670

²¹ Coincidentally JFLP Maclear was also a member of the 1871 Eclipse expedition perhaps an additional influence on Moseley's selection for the *Challenger* voyage. (Anonymous, 1872).

These were the three, British-born, members of the scientific party. All were from relatively affluent backgrounds.

675

John Murray was born on 3 March 1841 in Cobourg, now in Ontario, Canada. He was the second son of an accountant who had emigrated to Canada in 1834. After school and college in Cobourg he returned to Scotland aged 17 to continue his education enrolling to read medicine at Edinburgh University in 1864. Much of his character is revealed in obituary notice by George Agassiz, the eldest son of the famous oceanographer Alexander. (Agassiz, 1917), who comments that Murray was

680

“Impatient of dogmatic authority, he was somewhat scornful of inherited tradition, and treated his prescribed studies with a cheerful lack of consideration. For even in those days, he desired to find out things for himself, and delve for knowledge independently”.

685

He gained his scientific knowledge through contact with the “small group of scientific men who made Edinburgh famous” a circle that expanded to include the writer Robert Louis Stevenson. Armed with that broad and inquisitive nature, but without a degree, in 1868 he embarked as surgeon on the Scottish whaling ship *Jan Mayen* on a 7 month voyage to the Arctic. On his return he completed his studies in geology at Edinburgh University.

690

In 1872 he was recruited by Wyville Thomson to collect and prepare the scientific equipment for the *Challenger* voyage.

695

Rudolf von Willemoes-Suhm at age 25 was the youngest of the scientific party, born in Glückstadt, Schleswig Holstein, then part of Prussia, on Sept 11th 1847. His expertise had been gained entirely at German universities.

700

In 1872 he joined the Danish *Phoenix* expedition studying vertebrates and polychaetes around the Faroe Islands. On its return journey the ship called at Edinburgh on 10 October 1872 and on the 11th Willemoes-Suhm was invited to dinner by Wyville Thomson and his wife. Clearly impressed, Wyville Thomson said that if Thomas Huxley could persuade the Admiralty, then Willemoes-Suhm could join the *Challenger* expedition. Willemoes-Suhm took the train to London and met Huxley. By the 20th October he received the confirmatory telegram and on the 19th November was aboard *Challenger* in Sheerness. (von Willemoes-Suhm, 1877). This serendipitous and rapid engagement suggests that Willemoes-Suhm was a very impressive young man.

705

The oldest member of the scientific party was Jean Jacques Wild, who was a Swiss national born in Zurich in 1828 and who later anglicised his name to John James Wild. There is much less known about the pre-*Challenger* life of Wild than about the other civilian members of the party. It is thought that Wyville Thomson may have encountered Wild in Belfast.

Gazelle carried only one specialist civilian scientist apart from the astronomers who were, in effect, passengers from Kiel to Kerguelen and Mauritius, and so virtually all the scientific work of the voyage was carried out by serving naval officers under the leadership of von Schleinitz.

That single scientist was the 29 year-old zoologist Théophil Studer, (27 Nov 1845 – 12 Feb 1922)²², a Swiss ornithologist and the curator of the zoological collections and later professor at the Natural History Museum in Berne. He took part in the scientific and zoological work during the entire trip though he had not joined the vessel with this intention. He had meant to take part in operations as a member of the transit of Venus expedition studying the fauna and flora of Kerguelen. However, from the beginning of the journey he showed such great expertise in zoological research that it was thought essential that he remain on board. This was approved by “a higher authority”, (presumably the German Admiralty), and the University of Bern and he remained on board until the end of the voyage.

He went on to publish reports on Ophiuroidea and on the isopods and other crustaceans collected between the west coast of Africa and the Cape of Good Hope.

The ship's doctor Friedrich Carl Naumann²³ (born 1841) had trained in medicine and natural sciences at the universities of Berlin and Heidelberg before joining the (Prussian) Navy as a Fleet Surgeon. Before joining the *Gazelle* he had been on the 1869-71 voyage of the SMS *Medusa*²⁴, *Gazelle*'s sister ship, to South America and into the Pacific where he made botanical collections mainly in Japan and Hong Kong. He was responsible for the botanical collections from *Gazelle*. The ship's assistant doctor Carl Huesker, about whom little is known, helped with the zoological, botanical geological and anthropological research.

Though *Challenger* carried a party of expert scientists, since she was a survey vessel the officers were very much involved in making the scientific observations and indeed Thomson was involved in the preparation and publication of the narrative reports of the expedition.

²² https://en.wikipedia.org/wiki/Th%C3%A9ophile_Rudolphe_Studer Last access 6 June 2022.

²³ <https://plants.jstor.org/stable/10.5555/al.ap.person.bm000046495> Last access 6 June 2022.

²⁴ [https://en.wikipedia.org/wiki/SMS_Medusa_\(1864\)](https://en.wikipedia.org/wiki/SMS_Medusa_(1864)) Last access 6 June 2022.

740

We have already examined Nares' role; in addition Aldrich, Bromley, Bethell and Carpenter had responsibility for sounding, seabed sampling and temperature measurements. The other officers who would have been concerned with the scientific work were: Maclear who had responsibility for the magnetic observations which included intercalibrations with shore stations in South Africa and Hong
745 Kong, Bromley who took a particular interest in meteorology and maintained a personal log. Tizard made a particular study of the meteorology of Japan quite independent of the *Challenger's* objectives. (Tizard, 1876).

Challenger's scientific activities were thus a true joint enterprise between officers and civilian
750 scientists.

5 The voyages, routes and ports

Though both vessels circumnavigated the earth, their tracks, as shown in Figure 1, were markedly
755 different. The routes and port calls were dictated both by scientific objectives, and in the case of *Gazelle* by information received in preliminary reports from *Challenger*. A major logistical consideration for both ships was that regular calls at suitable ports were needed to replenish coal supplies and provisions. There were also timing constraints, most noticeable for *Gazelle* set by the time of the transit of Venus (November 1874) and for both vessels to avoid high southern latitudes in winter.

760

5.1 Scientific considerations

We can compare the routes in terms of their ability to achieve the following broad objectives

- revealing the deep-sea bathymetry and distribution of sea bed types in support of cable routing,
 - sampling a wide variety of ocean circulation regimes,
 - sampling deep water and shelf seas biology,
 - studying the ethnology, flora, fauna and geology of rarely-visited islands
- 765

The first of these could only be addressed in the most general of sense since there is no way that a few
770 hundred soundings can define global-scale bathymetry. In terms of potential cable routes, only *Challenger's* routes across the North and South Atlantic and North Pacific could be said to approach studying potential routes. The Pacific crossing, however, fails to cover the approach to the North American continent. Despite these shortcomings both ships' collection of seabed samples greatly

improved knowledge of the types of deep-sea sediments and their geographical and depth distributions;
775 information relevant to the selection of cable routes.

Most of *Challenger*'s North Atlantic stations were occupied during what was regarded as a training and trials phase. But in terms of exploration of the earth's major current systems they added several crossings of the Gulf Stream and North Atlantic current. *Challenger* also crossed the East Australia
780 Current, the Kuroshio and the Brazil Current. *Gazelle* made very few observations in western boundary regions.

Both vessels covered a wide range of latitudes, though neither entered the northern hemisphere subpolar regions. *Challenger* crossed the major structures of the Antarctic Circumpolar Current and occupied its
785 southernmost station on 14th February 1874 at 65° 42'S 79° 49'E (1½ miles from the edge of the pack ice). *Gazelle*, by contrast, ventured no further than about 52°S.

It should be remembered that neither vessel occupied stations close enough together to reveal the sharp frontal structures that we now know to characterise these major current systems. Remarkably, however,
790 the *Gazelle* measured surface temperature and salinity (actually specific gravity) every 2 hours throughout the voyage. These observations are, surprisingly, tabulated in the meteorology report (Teil 5), (Annex 2) but no positions are recorded corresponding with these measurements and they have never been analysed.

795 The Pacific sectors of the two voyages were markedly different. *Challenger* spending a significant time in the western Pacific between Australia and Japan crossing the equator three times. *Gazelle* entered the Pacific north of Australia and spend over 100 days surveying around New Guinea and the Bismarck Archipelago. The motivation for this was almost certainly with a view to assessing the commercial/colonial potential of the area. (Overlack, 1973, Ohff, 2008, 2015). After visiting Brisbane
800 and Auckland and making a northward excursion to Fiji, Tonga and Samoa, *Gazelle* headed across the South Pacific to the Straits of Magellan. *Challenger* by contrast headed east from Japan on approx. 35°N and then southwards via the what the *Challenger* reports refer to as the Sandwich Islands, the name given to the islands by Captain Cook but which was gradually being replaced by the name Hawaii particularly after the signing of the Reciprocity Agreement with the USA in January 1875 six months
805 before *Challenger* arrived.

After their passages through the Straits of Magellan, both vessels called at Montevideo, as was mentioned in the Introduction, and then returned to Europe by different routes - *Challenger* taking 88 days to reach Portsmouth and *Gazelle* 55 days to Plymouth.

810

Both ships appear to have deviated substantially from the route that was originally intended. For *Challenger* this occurred in the North Pacific. Rather than crossing from Japan to Vancouver Island and studying the California Current on her way to Cape Horn, *Challenger* headed to the Sandwich Islands (Hawaii) and thence to Valparaiso via Tahiti and Juan Fernandez. There are tantalising comments in Joe Matkin's letters that relate to this sector of the voyage. On p25 of "At sea with the Scientifics" he remarks

820

"We are to have warm clothing sent out to the Cape of Good Hope in a year's time and it will be issued before going down amongst the ice, or rather lent, for it will be taken away as soon as we reach the latitude of Melbourne and again issued at Petrapolowski (Petrapavlovsk) before going through the Bering Straits. We are also to have extra pay in the cold weather".

On page 122 he comments again about the voyage in the northern Pacific

825

"...on to Yodo (Osaka) Japan after which the Kuril Islands and Petrapolovsky (Petrapavlovsk) the cold capital of Kamchatka, thence Aleutian islands, Bering Straits and down to Vancouver about May 1875 after which we begin again".

One wonders whether this change of plan was brought about by the replacement of Nares, who had experience of high latitudes, in Hong Kong.

830

For *Gazelle* the departure from the plan concerned the high southern latitudes. There are clear indications, in *Gazelle*'s sailing orders that observations were planned far to the south. The first set states

835

"The bank or ridge in the ocean, which according to the latest investigations of the "*Challenger*" apparently connects the Kerguelen and MacDonal²⁵ Islands, should be examined more closely, particularly temperature conditions and currents" and "If ice is suspected, or if S.M.S. "*Gazelle*" is near icebergs, frequent and precise determinations of salinity and temperature must be made".

840

Indeed, the sailing instructions suggest that it was intended that the vessel might approach the Antarctic continent.

845

"The course is to be taken in such a way that SMS "*Gazelle*" does not occupy similar positions to those of the "*Challenger*", namely in the pack ice near the presumed Termination Land²⁶, but rather in the vicinity of Enderby²⁷ or Kemp's Land can advance. Under all circumstances, however, the S.M.S. "*Gazelle*" command must ensure that the ship does not get caught in pack ice or even get trapped in it, even if only for a while".

²⁵ MacDonal Island lies at 53°S

²⁶ Part of Wilke's Land in East Antarctica.

²⁷ Coasts at around 67° 30'S

In the second set, received in Cape Town, these references to the Southern Ocean are replaced with

850 “...leaving the port of Mauritius around the middle of March 1875, you have to endeavor to reach the parallel of latitude of 30° by the shortest route in order, following the same, to cross the Indian Ocean to the east”

Both vessels left a geographical legacy in the naming of features²⁸; *Challenger* most notably for the Challenger Deep in the Marianas Trench, *Gazelle* particularly around New Guinea with the naming of
855 the Gazelle peninsular and the von Schleinitz range of mountains in New Ireland and the later-named Gazelle Fracture Zone in the South Indian Ocean.

5.2 Logistics and statistics

860 Though the two vessels circumnavigated the world and made similar observations, the voyages differed in many respects, most notably in their durations. *Challenger* took 1250 days from 21 December 1872 to 24 May 1876, *Gazelle* 678 days, 21 June 1874 to 28 May 1876. The distances sailed were markedly different too, *Challenger* 68,590 nm and *Gazelle* approximately 36,000 nm. Though the two ships are noted for sailing around the globe, they spent a great deal of time in port (to replenish supplies,
865 including coal to send and receive mail to send samples and equipment home and to undergo repairs). *Challenger* spent 522 days in port or exploring islands and land masses. The figure for *Gazelle* was 297 days. Since a central element of both voyages was to explore rarely-visited regions, many of the port calls were in places that could provide little support for the ships or respite for the officers and crew. (Annex 1).

870

It is noteworthy that while *Challenger* spent a month or more in Simonstown (South Africa), in Sydney (Australia), in Hong Kong and in Yokohama, the *Gazelle* only had extended stays around Kerguelen in the inhospitable sub-Antarctic and exploring New Guinea and its surrounding islands. These differences are graphically summarised in Figure 5 and their implications will be explored more fully in section 7.

875

²⁸ <https://www.ngdc.noaa.gov/gazetteer/> Last access 6 June 2022.

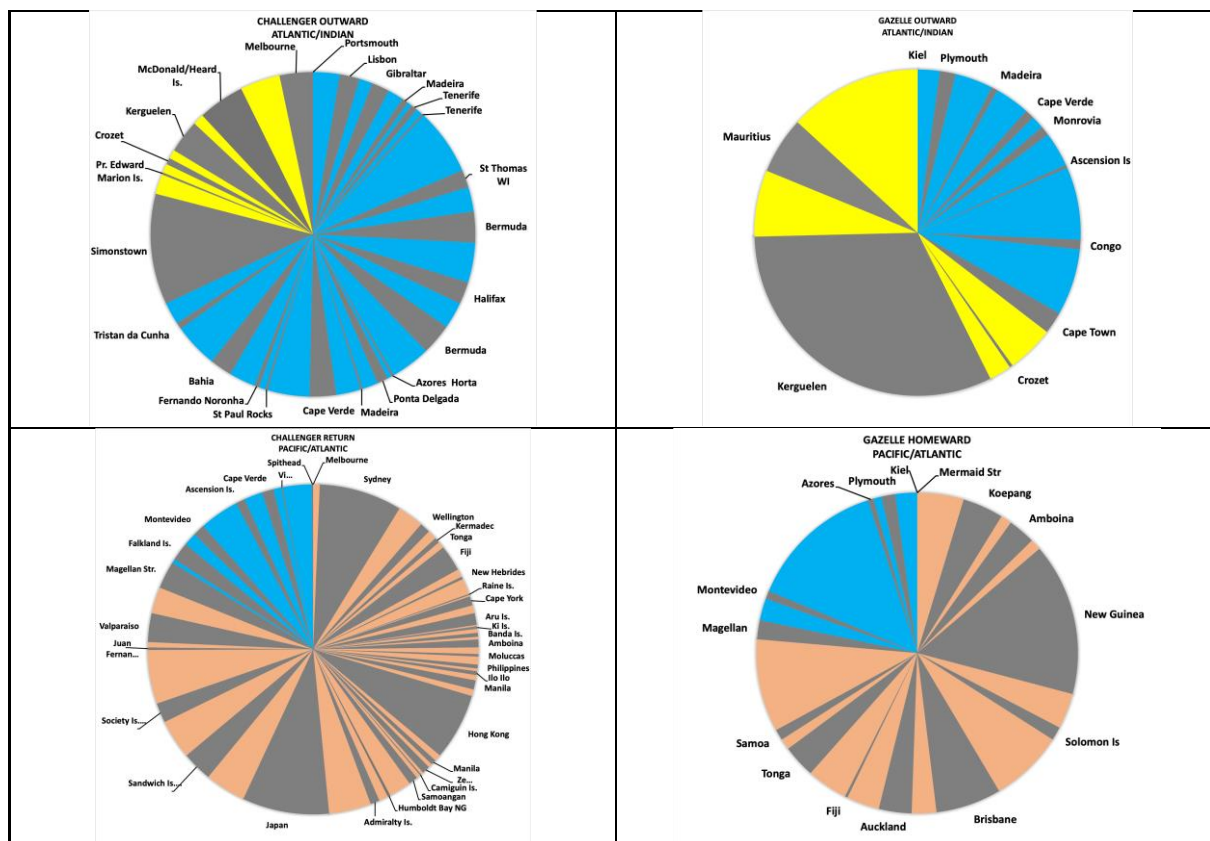


Figure 5: Time spent in ports and periods of extensive surveys (grey colouring, sequence reads clockwise) compared with time at sea (coloured sectors, Atlantic (blue), Indian/Southern (yellow), Pacific (brown)). Format follows that used by Aitken and Foulc (2019). Dates in port are in Annex 1.

5.3 Station routine

The time at sea on both ships was marked by the occupation of stations and each must have fallen into a well-practiced sequence of operations. This routine can be deduced from the summary narrative of *Challenger* (Wyville Thomson, 1878) and it is reasonable to assume that *Gazelle* would have operated similarly. Almost all station work was carried out during daylight hours with the preparations usually started between 06:00 and 08:00. Stations in deep water typically took between 10 and 12 hours. First came the firing of the boilers so that the steam propulsion could be used to keep the vessel head to wind on station and the donkey engine to be used to haul in the lines. With sailed furlled, the first observation was to take a depth sounding and recover a sample to reveal the nature of the seabed. This was followed by water sampling and temperature measurements using bucket sampling at the surface and slip bottles and thermometers at depth. Current drift was measured, biological net samples taken and finally dredging for biological and geological samples. This presumably was left to last so that the scientists

895 would have time to sort and preserve the samples and the crew clear the deck while on passage towards the next station.

The very different water sampling and temperature measurement strategies on *Challenger* and *Gazelle* are demonstrated in the figure of water sample distributions in the Additional Information provided in
900 Gould and Cunningham (2021). *Gazelle* sampled only 3 horizons (surface, 100 fm. and near the seabed). *Challenger* sampled 6 horizons between the surface and 1000 fm. but this regime started only after station 90 at the end of July 1873, resulting in the North Atlantic being comparatively poorly sampled.

905 **6 The balance between conservatism and innovation**

The planning of these two multi-year voyages took place in a time of rapid scientific and technological advances and it might have seemed natural for the most recent technological devices to be employed. Yet, a balance had to be struck between using methods and instrumentation that were well-tried, robust
910 and so could be easily maintained without access to specialist skills, and those that were innovative and which might give new insights. For both expeditions the emphasis seems to have been on reliability. This was perhaps especially true of *Gazelle* which carried only one scientist.

6.1 Rope vs wire

915

The most obvious generic technology that could have been used was multistrand wire rope rather than traditional hemp sounding and dredging lines. Multistrand wire rope had been increasingly used in bridge building and mining since the mid 19th century and was also being used in submarine telegraph cables. However, use at sea for the deployment and recovery of equipment where it would have to be
920 repeatedly wound on and off winches and would be subject to corrosion would have been a high risk and therefore *Challenger* and *Gazelle* both opted to retain hemp line. *Challenger* started the voyage with 20,000 fms.²⁹ of No 1 sounding line and took on board a further 20,000 fms. A total of 26,000 fms were used. 64,000 fms. of No 2 sounding line were embarked and 34,000 fms. expended.

925 The *Gazelle* report remarks that

“ The sounding lines delivered by the English shipyard had a length of 10,000 English fathoms and were made from Italian hemp, three-strand, cable lay, 27 yarns. Their circumference was 1 inch. (25.4 mm), the breaking load dry 792, wet 702 kg. These lines were used exclusively during the entire voyage to the deep-sea explorations, without ever

²⁹ 1 fathom (fm) = 6 ft = 1.8288 metre

930 breaking. In three cases the line brought 125 kilograms of sounding weights back to the surface from depths of more than 4500 meters when the sounding device had not worked when it hit the bottom. The lines came on board in lengths of 1000 fathoms spooled on small drums and were split in lengths of 125 fathoms with double short splices (cut-splice). On board a drum for 4000 fathoms was made and the line held on this ready for use. Initially it was intended to mark the line in metres in order to indicate the depths in the measure prescribed in the Imperial Navy; however, this was abandoned and the English fathom measure, according to which the depths are given in most of the existing nautical charts, was retained. The line was marked accordingly from 25 to 25(?)³⁰ fathoms. As marks for 100 fathoms each, strips of canvas that protruded from the line and showed a consecutive number applied with oil paint were found to be suitable for the purpose. The 25 and 75 fathom marks were marked with blue, the 50 fathom marks with red, with flag cloth tucked into the rope stands.”.

940

Ritchie, (2000), comments that the *Challenger* used tried and trusted observation methods with soundings made using rope and the so-called timed methods³¹.

6.2 Photography

945

The *Challenger* expedition was the first to carry an official photographer. In fact, there were three photographers at various times, Caleb Newbold, Frederick Hodgeson and Jesse Lay. The expedition's photographs were originally catalogued by John Horsburgh, (1885). There is a more recent catalogue of the over 800 photographs (Brunton, 1994). The original plates and prints are now widely scattered and Brunton lists 10 persons or institutions as owners. The majority of these photographs are landscapes, a significant number would be classified as ethnological and some are of groups of scientists, officers, crew or visitors. None show the interior of the vessel nor the conduct of its seagoing science activities. This might well be due, in the former case to the long exposure times needed which would have required the subjects to pose, or to the inadequate lighting below decks and inappropriate camera lenses.

955 An extensive discussion of the use of photography aboard Challenger is given by Jones, (2019).

Photographs were also taken on the *Gazelle* expedition but the report recounts a sad outcome.

960

“(Privy Councilor HARTMANN) not only took on in the most courteous manner, the processing of the S.M.S. *Gazelle*'s collected anthropological material, which work is set down in a special appendix. He also succeeded, in processing various photographic recordings of an anthropological and ethnological nature made on the trip. This was despite them being damaged due to the adverse climatic and weather conditions of the tropics and at sea where they had suffered so much from the long storage, that they no longer appeared viable for reproduction. The imperfect plates supplemented the areas mentioned with the help of his excellent knowledge - to produce drawings which made it possible to reproduce them in this work”.

965

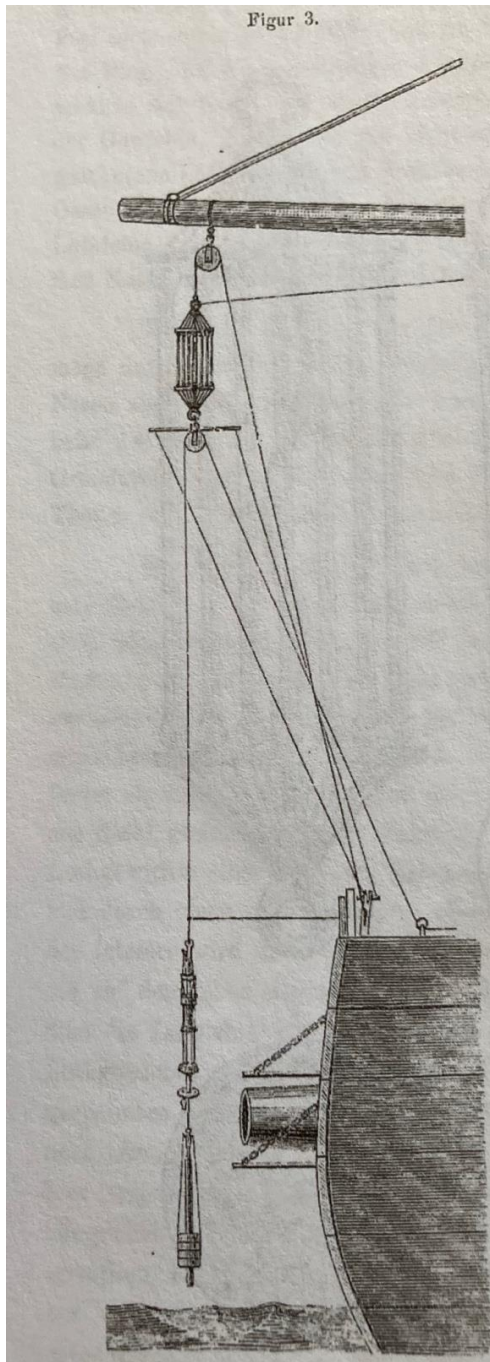
³⁰ Presumably this indicates an illegible or erroneous manuscript entry. The second value should perhaps be 75.

³¹ The time taken for each 25 fm. length of line to run out in free-fall with the sounder weight taking it towards the seabed. When the rate of descent suddenly slowed it indicated that the sounder had hit the bottom. When hauled in until an increase in tension was felt, the depth could be recorded.

There are many photographs of the astronomical work on Kerguelen (Duerbeck, 2004) and so it seems likely that those plates were shipped back to Germany from Mauritius and so avoided the damage reported above.

970

6.3 Oceanographic equipment



The equipment used to make oceanographic observations on the two vessels (water sampling bottles, deep sea thermometers, dredges, sounding weights) was virtually identical and represented the state of the art in instrumentation at the time as used and refined by Wyville Thomson and Carpenter. Indeed, *Gazelle* called in Plymouth on her outward voyage to collect much of her scientific equipment.

“S.M.S. *Gazelle* was equipped with the two sounding devices most commonly used for deep-sea sounding, the BAILLIE-Sounder and the HYDRA-Sounder, and three of the formertype and one of the latter. However, the HYDRA-Sounder was only used once, and since it did not work properly, all further measurements at great depths were carried out with the Baillie apparatus. The sounding equipment as well as the deep thermometer were all obtained from England, as there was no experience with this in Germany. With the kind co-operation of the Hydrographic Office in London, all the sounding devices were provided by the Royal Shipyard Chatham and delivered to the “*Gazelle*” when she was in Plymouth”.

The rigging and means of deployment of the equipment were also virtually identical to those used on *Challenger* as is demonstrated in Figure 6 which shows the elastic accumulator used as a shock-absorber.

Figure 6: Reproduction of Figure 3 (page 16) of the *Gazelle* narrative showing the deployment of a Baillie sounder.

Perhaps the most innovative technique used on either vessel was an attempt on *Gazelle* to measure the height and period of waves by making measurements of the ship’s rise and fall using a very sensitive

aneroid barometer. This activity is described briefly in Volume 2 of Hydrographisches Amt (1888) but, unsurprisingly, was not successful. (A 1m vertical displacement of the ship would have resulted in a pressure change of only 11 pascals (0.11mb). This is comparable with the pressure variations that would be caused by turbulent windflow around the ship and these would have been hard to separate from changes caused by waves). The problem of recording sea waves from a ship was not solved until the development of the shipborne wave recorder by Tucker (1952) who refers to the failed attempt by *Gazelle*.

In some ways the deep-sea thermometers used on both voyages were experimental in that their performance and ability to faithfully record the temperature profiles, particularly when the vertical variations were not monotonic, was not fully understood. *Challenger* embarked 35 “protected” thermometers to which a further 69 were added at intermediate ports and 48 “expended”- presumably lost or broken. The vast majority were the double bulb version of Six’s thermometer known as the Miller-Casella thermometer which recorded maximum and minimum temperatures. The true reversing thermometer was being developed by Negretti and Zambra at the time of the *Challenger* voyage and several were sent to the ship for comparison with the Miller-Casellas, though:

“Several thermometers for use in the apparatus were forwarded from time to time a greater number were found broken when they reached the ship, owing either to imperfect packing or negligence in the transport, but a sufficient number arrived in safety to admit of their having a fair trial”

Gazelle had 22 Miller-Casella thermometers and one Negretti-Zambra presumably sourced as were *Challenger*’s from Chatham and loaded in Plymouth. The subsequent controversies about the interpretation of the temperature measurements are summarised in Deacon (1971).

By the 1870s the rapid spread of the submarine telegraph cable network had stimulated interest in using electrical apparatus in the ocean. The leading innovator in this field was the Anglo-German William (Carl Wilhelm) Siemens (1823-1883, born in Germany but moved to London in 1843), (Thurston, 1884). He developed the bathometer: effectively the forerunner of the Conductivity-Temperature-Depth (CTD) probes that started to replace the reversing thermometers in the 1960s. The bathometer measured temperature using a sensor in one arm of a Wheatstone bridge and one of the instruments was used on *Challenger* and its comparison with thermometers reported. The bathometer was used more extensively by Alexander Agassiz aboard the USS *Blake* in 1881 and reported by Siemens, (1882). The *Challenger* instrument’s performance was reported (Narrative, Vol 1 Part 1) as follows:

1045 “Several more or less successful observations were made with this instrument during the cruise, which agreed fairly well with those made by the protected thermometers. No permanent place was fitted for the galvanometer or apparatus, and in consequence continuous and careful observations were not made. When accurate temperature observations are required from intermediate depths, this instrument is especially valuable, and it will in all probability be extensively used in future deep-sea investigations.”

This prescient observation might well be seen as the start point for modern-day electronic ocean science. *Challenger* also carried two other experimental devices. One, designed by Siemens, measured the depth to which light penetrated by exposing light-sensitive paper for a fixed length of time. The second, Buchanan’s piezometer sought to separate the effects of pressure and temperature (Rice, 1970). Neither of these devices was used routinely.

1055 Finally, there was one technology which arrived just too late to be employed aboard *Challenger* and *Gazelle*. This was the sounding machine developed by Sir William Thomson (later Lord Kelvin). A prototype was provided to the British Admiralty for use on the *Challenger* expedition but was declined as not being sufficiently reliable for use on such a long voyage. However, a version of the Kelvin machine modified by the Berlin instrument maker Carl Bamberg, was being used aboard USS *Tuscarora* in the North Pacific in 1874 (Theberge, 2014) and the fact that these 483 soundings had been made was a factor in the change of *Challenger*’s route across the north Pacific. Spry (1876) states:

1060 “Last year (1874) the United States government dispatched the steam vessel *Tuscarora* on a deep sea sounding cruise between San Francisco, the Sandwich Islands and the coast of Japan, with instructions on their return route to complete a line of soundings from Yokohama extending in a great circle to the north, passing along the islands of the Aleutian group and so towards Puget Sound with a view to finding a practical cable route across. The course therefore selected by us was one intermediate between these two (through the parallel of 35°N latitude) until reaching 155°West longitude”.

1070 The fact that *Tuscarora* made more soundings in a few months than *Challenger* made in almost 4 years shows the advantages of a Kelvin-type sounding machine. Arguably had the *Challenger* and *Gazelle* voyages been a few years later, both might have used sounding machines and thus saved considerable station time.

6.4 Divergence of scientific foci

1075 Though the core scientific observations of *Challenger* and *Gazelle* were similar, in other respects there were distinct differences, that might be accounted for largely by *Challenger* carrying a team of scientists while *Gazelle* carried naval officers and surveyors. Thus, the major focus of *Challenger* was marine biology and chemistry driven by the scientists on board. *Gazelle* made similar measurements of seawater properties and collected biological and geological samples for later analysis but also made

1080 extensive geophysical (gravity and geomagnetic) measurements better aligned to the interests and
experience of the naval surveyors she carried. It is interesting to note that the *Gazelle*'s magnetic
equipment was carefully calibrated in Berlin before the voyage and that the sailing orders include
encouragement to compare them with shore-based observatories at the Cape of Good Hope and
Mauritius and with the site established on Kerguelen. Such an intercalibration is now well-recognised as
1085 good scientific practice.

7 Health and safety

Nineteenth century ships were not safe places. Ships' companies on vessels such as *Challenger* and
1090 *Gazelle* had to deal with both the hazards of working aloft to set and furl the sails as well as managing
the steam engines, both those for propulsion and the donkey engines used to provide mechanical
assistance on deck. The crews included a significant number of young cadets (boys) in their mid-teens
with little experience. Warships were traditionally crowded and though they carried doctors (surgeons)
medical care and the understanding of disease was rudimentary by present day standards. The food,
1095 without refrigeration was similarly basic and monotonous. The two voyages discussed here covered a
wide range of climatic conditions ranging from the tropics to the Southern Ocean and spent long periods
far from land.

However, with the advent of steam engines came freshwater evaporated from seawater, thus freeing
1100 vessels from the vagaries and hazards of water supplied from shore. Though the water may have been
safer, it was not popular with *Challenger*'s crew. Matkin comments (Rehbock P32)

1105 "A good many of the men complaining of the water which is condensed from the sea at night & drank(sic) the next
day & is scarcely cool. I felt ill myself the other day but have improved by qualifying the water with a little Rum or
Lime juice".

The *Challenger* health record is covered in Appendix IV to the Narrative (Tizard, 1885) by Fleet-
Surgeon George Maclean, R.N. The opening lines convey the fact that ill health was not regarded as an
issue.

1110 "The medical history of the *Challenger* expedition is, fortunately perhaps, of little interest, considering the rapid
variations of climate experienced, the large proportion of time spent at sea, and the trying nature of the seamen's
work. The health of the ship's company during the commission of nearly 4 years must be regarded as exceptionally
1115 good, and will probably compare favourably with that of any ordinary cruiser on any of the foreign stations".

Scurvy was entirely absent and this was attributed to the diet, the issuing of lime juice³² (Smith, 2018) and, according to Maclean, the fact that

1120 "the duration of the passages was limited and was capable of being calculated with strict accuracy, owing to the use of steam."

This statement is at odds with Buchanan (1919)'s comment on page 36 that

1125 "Her screw propeller could be hoisted up out of the water. This was a great convenience because all the passage was made under sail. The whole amount of coal which she could carry was very little more than that required for manoeuvring the ship at the sounding and dredging stations".

The summary of the losses and illnesses states that there were on average 240 men on board and 7 deaths, 2 due to natural causes, three by violence (two by drowning and a single fatality to a seaman
1130 when a dredging rope broke) and 2 by poisoning. Eleven were invalided, and 15 sent to hospital. The only other losses of the ship's company were due to desertions

".... for which the attractions of the Australian ports visited were chiefly responsible."

1135 The diseases encountered were enteric fever (typhoid, 2 cases), yellow fever (1 case), malaria (28 cases, all comparatively mild), erysipelas (the single fatal case of this bacteriological skin disease that claimed the life of Willemoes-Suhm), 10 cases of syphilis and six of phthisis (pulmonary tuberculosis). Three men suffered from heart disease, five from bronchitis, two had pneumonia and there were many cases of catarrh.

1140 The health of the participants in the *Gazelle* voyage has been summarised by Hartmann (1995) but there are other glimpses of medical issues.

Chapter 14 of the *Gazelle* narrative starts sombrely and continues to recount the vessel's stay in
1145 Brisbane beginning 26 September 1875.

"Unfortunately, the *Gazelle*'s stay in Brisbane was significantly longer than intended due to an epidemic of illness among the crew.

³² Ironically, the British Antarctic Expedition (1875-6) which Nares led, suffered badly from scurvy. They chose not to carry lime juice because of its weight and the fuel needed to thaw it. <https://api.parliament.uk/historic-hansard/commons/1877/jun/18/navy-report-of-the-arctic-committee> Last access 6 June 2022.

1150 Under the influence of the hot climate and the long period eating only ship's rations³³ coupled with the exertions of constantly sailing the ship, chopping down and collecting wood the ship's company were repeatedly sick with tropical and typhoid fevers, dysentery and scurvy. Infections occurred, and in the short period from the beginning of July³⁴ to the end of September, unfortunately we mourned the death of five people.

1155 Later the number of sick people increased to 50 or so with up to 22 fever patients. Typhoid gradually assumed an epidemic character leading the Health Authority in Brisbane to quarantine the ship as soon as it arrived. As a result, the supply of the ship with coal, water and provisions became even more cumbersome and time-consuming. Additionally, since coal was not available in Brisbane, it had to be brought in from a distant pit.

1160 On October 7, the ship went to the quarantine station at Peel Island, where all those suffering from fever, insofar as they were not yet convalescent, went to the island's barracks. The whole ship, the hammocks, woollen blankets, the sailors' belongings etc. was repeatedly cleaned, disinfected and fumigated and all communication with the infirmary stopped.

1165 Through this and through the administration of a strong diet consisting exclusively of fresh provisions and strengthening drinks, it was possible to stop the spread of the epidemic, so that the ship could already be freed from the quarantine on October 12th. However, in order to be able to re-embark the sick, among whom unfortunately two deaths occurred, without danger, the stay had to be extended until October 20th. During this time regular traffic was maintained between the ship and Brisbane, and the officers and crew were treated with courtesy by both the German and English population".

1170

The report of a visit to the ship on October 16th, in a local newspaper³⁵ sheds further light on the situation. The ship was at anchor near the quarantine station on Peel Island and the report comments

1175 "We understand that, owing to the continued illness of some of the seamen of the *Gazelle*, now landed on Peel Island, it is probable that the vessel may remain in our waters for some days to come".

The report from the Peel Island quarantine station dated January 1, 1876, lists

1180 "*Gazelle* (German warship). Maybe around 10 deaths, with graves made up and head-boards with suitable inscriptions placed at each one, unlike many of the later graves from English ships".

The newspaper report also describes the crew's living quarters as follows

1185 "Near the engines are the furnaces and boilers, which are ranged on either side of the vessel, with a narrow passage between, and close to these is the condensing apparatus. This deck is the home of the sailors the space forward of the engines being occupied in the centre of the vessel by racks for the men's " kits," which were stowed away in canvas bags. On either side were to be seen the utensils used by the men in taking their meals, and overhead were the hooks to which their hammocks are swung, and the portable tables, kept there when not in use".

1190

The paper by Hartmann (1995), gives an overall perspective on the voyage but sheds light on some of the issues raised above. In particular the reference to "*chopping down and collecting wood*" during the

³³ Since leaving Mauritius on March 15th the vessel had been in significant ports for only 23 out of 195 days; 13 in Koepang (now Kupang in West Timor) and 10 in Amboina (now Ambon in Indonesia's Kupang State). Both were then Dutch colonies.

³⁴ She was then surveying north of New Guinea

³⁵ The Queenslander Saturday 23 October, 1875

period spent surveying New Guinea. This tropical area had light winds and the *Gazelle* had by then exhausted its coal supplies. Thus, the crew, who were already in poor condition, had to collect timber
1195 and bring it onboard to fuel the furnaces for the ship's steam engine, and to do this in high temperatures and humid conditions. The area was mosquito infested and, although at that time these were not recognised as the vectors for malaria, many of the crew were affected.

Hartmann also sheds light on many aspects of the health of *Gazelle*'s crew. In the "roaring forties" a
1200 sailor fell from the rigging and was killed and there were, among the crew

"a large number of so-called mechanical injuries, which today we call bone fractures, ligament ruptures and dislocations"³⁶.

1205 During the period spent around New Guinea

"on average, 7% of the crew were "sick on the bunk. On some days more than 50 people were not able to work".

In part this was due to the prevalence of malaria despite the officers and crew receiving daily
1210 prophylactic quinine (3 x 0.5g) since before their first approach to the African coast. Quinine was however unpopular and an officer is quoted (Richter, 1910) as saying

"Like the crew for a long time, we now have to swallow a lot of quinine, by which everyone is affected a little, some being affected very badly, I feel ill from it. The quinine makes the night watches very hard to manage, as one can
1215 barely keep a wake in the calm weather."

Hartmann also sheds light on the prevalence of scurvy, a disease that had at that time been eliminated from the Royal Navy. The diet of the *Gazelle*'s sailors was poor,

1220 "The meals on board consisted mainly of hard bread, the ship's biscuit, legumes like pearl barley and beans, once a week dried potatoes and salted meat, the so-called preserved meat, which was also issued once a week. This provision, which was stowed inside the ship, was called sea provisions. Fresh meat could only be served 7 times during the 6 months of travel or shortly after visiting a port.

1225 but was similar to that aboard *Challenger*. While around Kerguelen the diet was supplemented with Kerguelen cabbage which James Cook 100 years earlier had recognised as an antiscorbutic. Most significantly, the Imperial German Navy gave its crews citric acid rather than lemon or lime juice since it was cheaper and easier to store, but contained no vitamin C.

³⁶ Quotations are from the author's translation of Hartmann's paper.

1230 Even in the relatively benign climate of the Pacific there were hazards. A diamond back snake was brought on board and bit Dr Huesker who:

“believed he was dying as a result. Thank God the fear was in vain”

1235 Thus, the two vessels fared very differently with regard to health due, in large part, to the extremely long and arduous periods spent by *Gazelle* around Kerguelen (over 100 days with average temperature of 7°C) and around New Guinea (almost 2 months with high humidity and temperature around 30°C³⁷) and the poor diet and flawed prophylaxis.

1240 **8 The reports**

For both voyages, the process of analysis, interpretation and reporting was a long one. For *Challenger* it lasted from 1885 until 1895. The *Gazelle* reporting covered only 2 years but the first was not published until 13 years after the voyage’s completion. Each was hindered by the deaths and illness of key
1245 personnel.

Rudolf Willemoes-Suhm died at sea. He had suffered from eruption of boils for much of *Challenger*’s voyage and died on September 13th 1875, a few days after the vessel left Hawaii. The cause of death was given as erysipelas, a bacterial infection, which now would be treated with antibiotics. A memorial
1250 plaque was erected in Izehoe, Schleswig Holstein, by his *Challenger* colleagues. It was later moved to Bad Segeberg (Kortum, 1996), perhaps by von Willemoes-Suhm’s mother with whom he had corresponded throughout the voyage. (von Willemoes -Suhm, 1877).

On his return from the expedition Wyville Thomson had been elected a Fellow of the Royal Society and
1255 received the Society’s Royal Medal. Its citation was “For his successful direction of the scientific investigations carried on by HMS *Challenger*”. (Since the medal’s inception in 1826, very few awards did not mention a particular area of science)³⁸ .

Further insights to Wyville Thompson’s life as a scientist and to his character are in the obituary notice
1260 (Balfour, 1883) read to the Botanical Society of Edinburgh³⁹ on 13th April 1882. Following his return, it was noted that the voyage “*had not brought about increased vigour*” and indeed the planning of the

³⁷ Temperatures estimated from the meteorological records in Volume 5 of the *Gazelle* report.

³⁸ <https://royalsociety.org/grants-schemes-awards/awards/royal-medal/> Last access 6 June 2022.

³⁹ P278 of

https://www.google.co.uk/books/edition/Transactions_and_Proceedings_of_the_Bota/vpBMAAAAMAAJ?q=&gbpv=1#f=alse Last access 6 June 2022.

analysis of the results of the expedition and the preparation of the reports must have been a considerable burden on him in addition to the lecturing about the voyage that he was called on to do. Balfour, a personal friend, records that in June 1879 he suffered a paralytic attack (perhaps a stroke) and a second one at the beginning of 1882. He died on March 10th of that year aged 52 and is buried at St Michael's Church, Linlithgow.

Buchanan's recollections of the *Challenger* Expedition are recorded in the chapter "A retrospect of Oceanography" in his book "Accounts Rendered of Works Done and Things Seen", (Buchanan,1919).

Deacon (1971) provides an insightful summary of the political, personal, financial and scientific issues surrounding the disposition of the collected samples and the process of publication of the *Challenger* reports. Wyville Thomson, had stipulated before the voyage that the samples should become government property and he secured funding for 5 years to cover the cost and expenses of the staff concerned with storing the samples and writing the reports. This was opposed by the British Museum who, eventually, secured the terrestrial items while the marine material was retained in Edinburgh where a Challenger office had been established at 32 Queen Street. This office would serve as the focus for the publication process even though the *Challenger* scientists eventually returned to their former academic positions. The Challenger offices saw a steady stream of international scientists involved in the preparation of the reports. However, the publication process was slow and when the initial funding was coming to an end the Government (Treasury) gave no hope of the grant's renewal. The stress this caused to Wyville Thomson may well have contributed to his illness and sudden death. Eventually the Treasury relented, allocated a further 5 years of funding and John Murray became Director of the Challenger office. The publication process, the analysis of the results and samples from *Challenger* stimulated much scientific discussion and debate.

At the end of the publication process in 1895 John Murray designed and paid for the production of a Challenger medal⁴⁰ to be issued to people who had been involved in the expedition and in the publication process. 120 medals were struck and issued between 1895 and 1897. Murray was knighted in 1898. The medals were awarded to the ship's officers, scientists, and crew, to scientists involved in the publication and to politicians and others who had helped make the expedition possible.

⁴⁰ An online index of the medals can be found at <http://www.19thcenturyscience.org/HMSC/Chall-Medal/ChallengerMedal.html> (accessed 14 Apr 2022).

1295

1300

1305



1310

Figure 7: An almost complete set of *Challenger* reports (National Oceanographic Library,

Ozeanforschung, Kiel)

The *Challenger* reports finally ran to a total of 50 volumes⁴¹ and were compiled by a large, international group. For the present-day researcher, navigating through their many pages to find specific pieces of information presents a considerable challenge.

1315

The publication of the reports of the *Gazelle* voyage followed a very different but no less difficult path. Since *Gazelle* was a survey vessel, von Schleinitz submitted regular short reports via mail steamer (particularly relating to surveys of harbours and coasts), and these were published in “Annalen der Hydrographie und Maritimen Meteorologie”, the journal of the German Hydrographic Office and Coastguard. However, the Introduction to volume 1 of the *Gazelle* reports shows that their publication had not been planned.

1320

1325

“ it was not at the time the intention to summarize and publish the results of the research in a special report; only later, a few years after the expedition, when the rich and valuable material collected on the voyage was assessed, did the need become clear to process it further and to compile it into a unified work”.

⁴¹ Online at <https://www.biodiversitylibrary.org/bibliography/6513> Last access 6 June 2022.

There is a clear recognition that this delay seriously hindered the process of report preparation not least in that the material and information collected by *Gazelle* had become scattered. However, in 1880 a memorandum was submitted to the Reichstag and funds were allocated and, partly through the auspices of the Academy of Sciences, a concerted effort to prepare the reports began.

“The preparatory work for the publication was carried out up to the beginning of 1886 under the personal direction of the former commander of S.M.S. "*Gazelle*", Kontre-Admiral Freiherr von Schleinitz. When he was taken from this activity by his appointment as governor of Kaiser Wilhelms-Land and the Bismarck Archipelago⁴², the head of the Admiralty commissioned the Hydrographic Office with the publication of the work and under the same the Admiralty Council Captain Lieutenant D. ROTTOK with the publication work. This task was not an easy one, firstly because of illnesses of individual employees and also because various work had either not yet started or been completed, so the collection of the material intended for publication was made extremely difficult and impossible. In addition, the funds allocated for the work set rather narrow limits on the scope of the same. This resulted in a considerable reduction of some already completed parts and a few significant restrictions on others, and in some cases it was necessary to exclude individual sections from publication”.

Though he had not previously been involved in the *Gazelle* voyage, Rottok was clearly a key person in the publication process which resulted in 5 volumes: Volume 1, The narrative: Volume 2, Physics and Chemistry: Volume 3, Zoology and Geology: Volume 4, Botany: Volume 5, Meteorology. (See Annex 2 for the full contents list). It had been intended that the meteorology would be included in volume 2 but

“To classify the results of meteorological observations in this part, (2) as was originally planned, had to be given up on account of their great extent. It is intended, however, that the extensive material, which has been completed under the direction of the director of the Naval Observatory, if the means at hand allow it, to be subsequently published in a special fifth part.⁴³

The difficulty in preparing the reports is illustrated by the following quotation.

“It caused great embarrassment when Dr. GOTTSCHKE, who had studied the very extensive and valuable collection of liverworts, suddenly fell ill and could not finish his work. Eventually, Privat docent DR SCHIFFNER found himself ready in Prague to finish the work. The painstaking processing of the Diatomaceae, to which Director JANISCH had devoted himself tirelessly for years, came to a very regrettable end after a number of interesting and valuable tables of the Diatomaceae he had identified had come to a halt due to ongoing illness. It has not been completed and in order not to postpone the publication of the work any longer, has unfortunately been omitted from the publication.”

What is perhaps revealing is the heavy emphasis in the *Gazelle* Narrative (Volume 1) on anthropology. Approximately half the illustrations and large parts of the text in that volume are devoted to the subject.

⁴² In 1884 the northeast part of New Guinea and nearby island groups became a German Protectorate, Kaiser-Wilhelmsland. von Schleinitz was appointed its first Governor (Landeshauptman) returning to Germany in 1888. <https://adb.anu.edu.au/biography/schleinitz-georg-gustav-freiherr-von-4542> (access 15 April 2022)

⁴³ This was written in 1889 but part 5 was not published until 1890

The international nature of the preparation of the *Challenger* material, and the international connections of the *Challenger* scientists have already been mentioned and this international dimension continued with the reporting which involved scientists from 10 nations. These contributors are listed in Annex 3.

1370

By contrast, the *Gazelle* scientists and naval officers involved in writing the reports were, with the exception of Dr Studer who was Swiss, all German. From a modern-day perspective, it also seems remarkable that no French scientists were involved in the preparation, execution and reporting of either of the voyages but this may be explained by the diminished state of French science following the conclusion of the Franco-Prussian war. (Crosland, 1976, Dolan , 2020).

1375

9 Postscript and conclusions

So, how were the voyages regarded as they came to their conclusions? The end of Volume 2 of the *Challenger* narrative contains the following assessment

1380

“ finally the crew was paid off at Chatham on the 6th of June 1876. Sir C. Wyville Thomson says:- “Writing now after the commission has come to a close, I think I am justified in saying that the object of the expedition had been fully and faithfully carried out. The instructions of the Lord commissioners of the Admiralty, founded upon the recommendation of a committee of the Royal Society, were followed so far as circumstances would permit. We always kept in view that to explore the conditions of the deep sea was the primary object of a mission, and throughout the voyage we took every possible opportunity of making a deep-sea observation. We dredged from time to time in shallow water in the most remote regions, and we have in this way acquired many undescribed animal forms; and collections of land animals and plants were likewise made on every available occasion; but I rather discourage such work, which in our case could only be done imperfectly, if it seemed likely to divert our attention from our special object”

1385

1390

Joe Matkin (Rehbok, 1992) wrote his last letter from Chatham Dockyard on June 11th where *Challenger*'s crew were paid off and the ship was to be decommissioned. It was to be the end of his Naval service. His letter provides a view from “below decks”.

1395

“.. several of those who were entitled took their discharges from the Navy - myself among the number – finding Sea-life nought but vanity, and vexation of Spirit, especially the latter – my opinion of it coinciding with that of Dr Samuel Johnson 's AD 1776 - with which quotation I will conclude my long series of letters from HMS *Challenger*: A ship is worse than a jail. There is, in a jail, better air, better company, better conveniency of every kind: & a ship has the additional disadvantage of being in danger. When men come to like a sea-life they are not fit to live on land. Men go to sea, before they know the unhappiness of the way of life; & when they have come to know it, they cannot escape from it, because it is then too late to choose another profession; as indeed is generally the case with men when they have once engaged in any particular way of life. Hoping to see you tomorrow, Believe me, Sincerely your Joe Matkin”

1400

1405

Rehbok comments that Matkin's letters hint at strained relationships between the crew and the officers and scientists and at the particular challenges the crew faced due to long periods spent in inhospitable climates.

1410

The conclusion of the *Gazelle* narrative includes no summary, no assessment of achievements nor any comment on the end of the voyage. It merely ends with the words

1415

“On the 28th in the morning at 6 1/2 o'clock the Bülk lighthouse came into sight as the first outpost of the home port. At 8 o'clock we passed it and an hour later the lighthouse of Friedrichsort was passed and we entered the port of Kiel, where the "Gazelle" tied up at the buoy at 9 3/4 o'clock. After the inspection of the ship by the Chief of the Admiralty, which took place on the following days, disarmament proceeded and on May 12 at 2 p.m. with the usual ceremony and with a toast to His Majesty the Emperor the "Gazelle" was decommissioned.

1420

Perhaps a more insightful, but unofficial, view of the *Gazelle* voyage is in the diary of *Gazelle*'s purser quoted by Hartmann (1995),

“Gott lob, diese schwere und mühevollen Reise liegt nun hinter uns”

"Thank God, this difficult and arduous journey is now behind us"⁴⁴

1425

On their return, both vessels were nearly 20 years old but were reaching the end of their useful lives. *Challenger* had a refit in 1878 to convert her to a training ship but was not used for that purpose and was put in reserve until 1883. She then became a hulk on the river Medway and was scrapped in 1921. *Gazelle* continued in naval service until 1884 later becoming a barrack ship in Wilhelmshaven and
1430 being broken up in 1906. (Gröner, 1990). All that remains of the ships is *Challenger*'s figurehead standing guard at the entrance to National Oceanography Centre in Southampton.

9.1 Legacy

1435

From a 21st century perspective the data and preserved samples from these 19th century global voyages provide an important baseline against which the modern ocean, affected by anthropogenic climate change, may be compared (e.g. Roemmich, Gould and Gilson, 2012, Gould and Cunningham, 2021) and help us to address such issues as ocean heat storage, acidification and its effect on marine organisms and the acceleration of the global hydrological cycle. After the Challenger material had been
1440 studied and reported most of the marine material was deposited at the Natural History Museum in London where it still resides and is available for study. (e.g Fox et al., 2020). So, their value has lasted 150 years.

⁴⁴ Bruno Buchwald: *Die Forschungsreise S.M.S. „Gazelle“ 1874 bis 1876. Tagebuchnotizen des Oberbotteliers Rudolph Buchwald.* Hamburg, Berlin 1999, S. 11. Held by Marineschule Mürwik, Germany

1445 It cannot be denied that the *Gazelle* voyage became almost invisible in the shadow of *Challenger*. The roots of that invisibility can probably be traced to the fact that, although the quality and scope of the observations were similar, the undoubted traumatic nature of the *Gazelle* voyage was perhaps a factor in the delayed publication of the report. Momentum was lost. An additional factor may be found in the underlying motivations for the *Gazelle* voyage which are hinted at in the first volume of the report and can be summarised and roughly ranked as:-

- 1450
- Improving the technical capabilities of the newly-formed Imperial German Navy
 - “Showing the flag” for that Navy
 - Transporting the “Transit of Venus” astronomers
 - Anthropological and colonial exploration
 - Adding to our knowledge of the deep oceans and shelf seas.

1455

Perhaps none of these was seen as giving a strong motivation for celebrating the voyage’s achievements. One might even speculate that had it not been for the transit of Venus and the colonial aspirations there would have no good reason for a circumnavigation by *Gazelle*.

1460 We have already commented that the fact that the *Challenger* reports were compiled by an international team (Annex 3) and this may have contributed to *Challenger*’s visibility. Kortun (1996) also speculates that had von Willemoes-Suhm survived he might have played a critical role in building scientific bridges between Britain and Germany based on the *Challenger* and *Gazelle* voyages. This might have increased the visibility of the *Gazelle* voyage.

1465

The lasting scientific legacy of both voyages is the information contained in their published reports and in unpublished logbooks, notes and diaries together with the preserved samples that were collected. The reports are readily available in print and online but other material is widely scattered and, in the case of *Gazelle*, little seems to have survived the intervening 150 years. Fortunately, after the *Challenger* samples had been studied and reported on, most of the marine material was deposited at the Natural History Museum (NHM) in London where it still resides and is available for study. Because the voyages took place early in the industrial age, the recorded observations made from both ships provide an important baseline against which the modern ocean, affected by anthropogenic climate change, may be compared. Such studies have included temperature change (Roemmich, Gould and Gilson, 2012, 1470 Wenegrat et al 2022), salinity change as an indicator of changes in the global hydrological cycle (Gould and Cunningham, 2021). The *Challenger* samples have been used to show the impacts of recent ocean acidification on planktonic foraminifera (Fox et al., 2020). Samples collected in the 1870s also provide

a rich resource for taxonomists, though it is a cause for concern that access by researchers to the enormous *Challenger* collection may be at risk by changing priorities at the NHM (Naggs, 2022).

1480

Anniversaries provide catalysts for celebrations and re-assessments. 100 years after *Challenger* sailed, Eric Linklater's book "The Voyage of the Challenger", (Linklater, 1972), brought the voyage back to the attention of the general public. A *Challenger* centenary medal was struck and, at a celebratory dinner, Madeira wine that had been carried around the North Atlantic aboard *Challenger* was drunk.

1485

(Rutherford, 1972, Mayson, 2015). We now approach the 150th anniversaries of these voyages and, while there will be many retrospective assessments, a fitting tribute to all those involved in the two expeditions would be the further use of their measurements and samples to better understand the oceans' role in earth's climate.

1490 **Data availability**

No data sets were used in the production of this paper.

Competing interests

The author has declared that there are no competing interests.

1495

Acknowledgements

The origins of this paper can be traced back to 2018 with the analysis (with Stuart Cunningham) of the salinity observations from *Challenger* and *Gazelle*. This was the first time that data from these voyages
1500 had been combined. It was then that I became intrigued by the voyage of the *Gazelle* and its invisibility.

I wish to thank German friends and colleagues Gerold Siedler, Walter Zenk, Klaus-Peter Koltermann and also Gwyn Griffiths and Tony Rice for their encouraging and constructive comments on an early draft of this manuscript. The support of Emma Guest and other staff of the UK National Oceanographic
1505 Library is also gratefully noted. Neil Fraser (Scottish Association for Marine Science) kindly prepared Figure 1.

References

- A. M. F.: Obituary: Captain Thomas Henry Tizard, C.B., F.R.S., R.N., *Geogr. J.*, 63(5), 460–462, 1924.
1510 <http://www.jstor.org/stable/1781248> Last access 6 June 2022.
- Anonymous: The Great Circumnavigating Exploring Expedition., *Nature*, 6, 529–530,
<https://doi.org/10.1038/006529a0>, 1872.
- Anonymous: The Scientific Orders of the “Challenger” . *Nature* 7, 191–193 (1873).
<https://doi.org/10.1038/007191a0> , 1873.
- 1515 Anonymous: Scientific Worthies. *Nature* 14, 85–87, 1876.
- Agassiz, G.R.: Sir John Murray., *Proc. Am. Acad. Arts Sci.*, 52, 853-859, 1917.
<https://www.jstor.org/stable/20025726?seq=1> Last access 6 June 2022.
- Aitken, F. and Foulc, J-N.: From Deep Sea to Laboratory 1: The First Explorations of the Deep Sea by
HMS Challenger (1872-1876). James Wiley, ISBN 978-1-78630-374-5, 2019.
- 1520 Balfour, J.H.: Obituary Notice of Sir C Wyville Thomson. *Trans. & Proc. Bot. Soc.*, 16, 278-281, 1883.
- Bell, K.: British Policy Towards the Construction of the Suez Canal, 1859–65, *Trans. R. Hist. Soc.*, 15,
121-143, 1965.
- Bourne, G.C.: From Moseley's Notes by a Naturalist, second edition, 1892.
<https://web.prm.ox.ac.uk/sma/index.php/primary-documents/primary-documents-index/391-moseley-memoir.html> Last access 6 June 2022.
- 1525 Brunton, E.V.: The Challenger Expedition, 1872-1876: A Visual Index. (Second Edition), The Natural
History Museum, London. 242pp. ISBN 0 565 0 91913 , 1994.
<https://www.biodiversitylibrary.org/item/164698#page/2/mode/1up> Last access 6 June
2022.
- 1530 Buchanan, J.Y.: Accounts rendered of Works Done and things Seen, Cambridge University Press,
435pp, 1919.
<https://ia800209.us.archive.org/7/items/accountsrendered00buchuoft/accountsrendered00buchuoft.pdf> Last access 6 June 2022.
- Carpenter, W. B.: On the Gibraltar Current, the Gulf Stream, and the General Oceanic Circulation.,
1535 *Proc. R. Geogr. Soc.*, 15(1), 54–91, <https://doi.org/10.2307/1799637> , 1870.
- Cartwright, D.E.: Tides, a Scientific History., Cambridge University Press. 292pp., ISBN 0-521-62145-
3, 1999.
- Crosland, M.: Science and the Franco-Prussian War., *Social Studies of Science*. 6(2) pp.185-214. 1976.
- Darwin, C.: On the origin of species by means of natural selection, or, the preservation of favoured
1540 races in the struggle for life. London: J. Murray., 1859.

- Davoust, E.: Le voyage de l'expédition allemande pour observer le passage de Vénus du 8 Décembre 1874 aux îles Kerguelen, et son séjour en ces lieux., Pulsar, 733, 8-12, 1999. An English translation is available at <https://arxiv.org/ftp/arxiv/papers/2011/2011.03402.pdf> Last access 6 June 2022
- 1545 Dawson, L.S.: Memoirs of Hydrography, including brief biographies of the principal officers who have served in HM Naval Surveying Service between the years 1750 and 1885. Part 2. 1830-1885. Eastbourne: Henry W. Keay, 209pp, 1885, <https://archive.org/details/memoirshydrogra00dawsgoog/page/n6/mode/2up> Last access 6 June 2022.
- 1550 Deacon, M.B.: Scientists and the Sea 1650-1900 a study of marine science., Academic Press, London, 445pp. ISBN 0-12-207850-0 , 1971.
- Dolan, J.R.: The Origins of Oceanography in France: The Scientific Expeditions of Travailleur and Talisman (1880–1883). *Oceanography*. 33(2), pp.126-133. 2020. doi.org/10.5670/oceanog.2020.202
- 1555 Duerbeck, H.W.: The German transit of Venus expeditions of 1874 and 1882: organization, methods, stations, results., *J. Astron. Hist. Herit.* 7, 8-17, ISSN 1440-2807, 2004.
- Durmont-d'Urville, J.S.C.: Voyage au Pôle Sud et dans l'Océanie, sur les corvettes "l'Astrolabe" et "la Zélée"., Paris, Gide éditeur, tome 8, p. 136-181,1842-6.
- Fox, L., Stukins, S., Hill, T. et al.: Quantifying the Effect of Anthropogenic Climate Change on Calcifying Plankton., *Sci. Rep.*, 10, 1620 <https://doi.org/10.1038/s41598-020-58501-w>, 2020.
- 1560 Gould, W.J., Cunningham, S.A.: Global-scale patterns of observed sea surface salinity intensified since the 1870s., *Commun Earth Environ*, 2, 76, 2021. <https://doi.org/10.1038/s43247-021-00161-3> Last access 6 June 2022
- 1565 Gröner, Erich: German Warships: 1815–1945. Vol. I: Major Surface Vessels. Annapolis, MD: Naval Institute Press. ISBN 0-87021-790-9.,1990.
- Güssfeldt, P., J.A.F. Falkenstein, E. Pechuel-Loesche, E.W. Baldamus, 1888. Die Loango-Expedition ausgesandt von der Deutschen Gesellschaft zur Erforschung Aequatorial-Africas, 1873-1876.,1888. <https://library.si.edu/digital-library/book/dieloangoexpedi00gssf> Last access 6 June 2022
- 1570 Harley, Charles K.: [first pub. 1971]. "The Shift from Sailing Ships to Steamships, 1850-1890: A Study in Technological Change and its Diffusion". In McCloskey, Deirdre (ed.). *Essays on a Mature Economy: Papers and Proceedings of the MSSB Conference on the New Economic History of Britain 1840–1930* (3rd ed.). New York: Routledge. pp. 215–234, [ISBN 978-1-136-58671-2](https://doi.org/10.1080/00141801.2010.500000), 2010.
- 1575

- Hartmann, V.: Medizinische Besonderheiten während der Forschungsreise der Gedeckten Korvette S. M. S. Gazelle um die Welt in den Jahren 1874–1876. In: Würzburger medizinhistorische Mitteilungen. Band 13, 371–390, 1995.
- Hollyday, F.B.M.: Bismarck's Rival: A Political Biography of General and Admiral Albrecht von Stosch. Normanby Press, 305pp. ISBN 9781787203839, 2017.
- 1580
- Horsburgh, J.: Catalogue of the photographic Negatives taken during the Challenger Expedition 1872-1876. HMSO Edinburgh, 12pp., 1885.
- Hydrographisches Amt der Admiralität.: Die Forschungsreise, S.M.S. "Gazelle" in den Jahren 1874 bis 1876: unter Kommando des Kapitän See Freiherrn von Schleinitz, Teil 1. Der Reisebericht.
- 1585 (E. S. Mittler und Sohn, 1888.
Teil 2 Physik und Chemie, 1888.
Teil 3 Zoologie und Geologie, 1889.
Teil 4 Botanik, 1889.
Teil 5 Meteorologie, 1890
- 1590 Jones, E.L.: Making the Ocean Visible: Science and Mobility on the Challenger Expedition, 1872-1895. PhD Thesis, University College, London. 320pp., 2019.
https://discovery.ucl.ac.uk/id/eprint/10087545/13/Erika%20Jones_Making%20the%20Ocean%20Visible_2019_edited.pdf Last access 6 June 2022.
- Kortum, G.: The German Challenger of Neptune., The History of Oceanography Newsletter. No 8, 1996. http://ijnhonline.org/volume3_number2-3_AugDec04/ocgr%20pdf%20archive/HISTOC08.pdf Last access 6 June 2022.
- 1595
- Linklater, E.: The voyage of the Challenger. J. Murray, 288pp., 1972.
- Lyell, C.: Principles of Geology. John Murray, London. Various editions and paginations., 1830-68.
- Maury, M.F.: The Physical Geography of the Sea., Sampson Low, Son and Co, London., 273pp and 1600 plates, 1855.
- Moseley, H.N.: Notes by a Naturalist. An account of observations made during the voyage of HMS Challenger, round the world in the years 1872-1876., John Murray, London, 540 pp., 1892.
<https://www.biodiversitylibrary.org/bibliography/14281> Last access 6 June 2022.
- Mayson, R.: Madeira: The islands and their wines., Infinite Ideas Limited, Oxford, UK, 282pp. ISBN 1605 978-1-909652-91-0, 2015.
- Naggs, F.: The Tragedy of the Natural History Museum. Megatata, 7(1). DOI: [10.11646/megatata.7.1.2](https://doi.org/10.11646/megatata.7.1.2)
- Navy Department: Report of circumnavigation committee of Royal Society on request of British Admiralty for suggestions relative to scientific work of proposed expedition of Her Britannic Majesty's ship "Challenger" round the world. Bureau of Navigation of the Navy Department, Government Printing Office, Washington D.C. 15pp.
- 1610

1872 <https://curiosity.lib.harvard.edu/expeditions-and-discoveries/catalog/38-990067600400203941> Last access 26 August 2022.

- Ohff, Hans-Jurgen: Empires of enterprise: German and English commercial interests in East New Guinea 1884 to 1914., PhD Thesis, University of Adelaide, 449pp and Annexes., DOI 10.4225/55/59e9603ddb7e42008, 2008.
- 1615 Ohff, H.-J.: Disastrous Ventures: German and British Enterprises in East New Guinea up to 1914., Plenum Publishing. [ISBN 10: 0994304536](https://doi.org/10.1007/978-1-4020-3941-1), 2015.
- Overlack, Peter: German New Guinea: a Diplomatic, Economic and Political Survey, pp128-152 in J. R. Hist. Soc. Qld., 9,128-152, 1973.
- 1620 Rehbock, P. H. (ed): At Sea with the Scientifics – The Challenger letters of Joseph Matkin., University of Hawaii Press, Honolulu, 415pp., SBN-13: 9780824814243, 1992.
- Rennell, J.: The Currents of the Atlantic Ocean and those which Prevail between the Indian and Atlantic Oceans, JG and F Rivington, London. 359pp and charts., 1832.
- Rice, A.L.: British Oceanographic Vessels 1800-1950. The Ray Society Series No. 157. London: The Ray Society., 193 pp, ISBN 0-903874-19-9, 1986.
- 1625 Rice, A.L.: The Challenger Expedition/ the end of an era or a new beginning? Chapter 1 in Understanding the Oceans. Margaret Deacon, Tony Rice and Colin Summerhayes, Eds., UCL Press, London, 300pp. ISBN 1-85728-706-1, 2001.
- Richardson, P.L.: Benjamin Franklin and Timothy Folger's First Printed Chart of the Gulf Stream. Science, 207, 643-645, 1980.
- 1630 Richter, J.W.O.: Die Forschungsreise Sr. Maj. Korvette „Gazelle" Nach amtlichen Berichten, sowie Briefen, Tagebuchblättern und Aufsätzen der Teilnehmer, Altenburg., Deutsche Seebücherei, XXIV, 1910.
- Ritchie, S.: A brief History of 19th Century Deep Sea Sounding., Int. Hydrogr. Rev. (New Series), 1, 6-14, 2000. <https://journals.lib.unb.ca/index.php/ihr/article/download/20479/23642/> Last access 6 June 2022,
- 1635 Roemmich, D., Gould, W. John., and Gilson, J.: 135 years of global ocean warming between the Challenger expedition and the Argo Programme. Nature Clim Change, 2, 425–428, <https://doi.org/10.1038/nclimate1461>, 2012.
- 1640 Rutherford, W.H. (Ed.): Second International Congress on the History of Oceanography. Challenger Expedition Centenary, Edinburgh, September 12 to 20, 1972. Proceedings 1. Proc. R. Soc. Edinb .B, Biological Sciences, 72. Royal Society of Edinburgh: Edinburgh. viii, 462 pp., 1972.

- 1645 Scherzer, K.: Reise Der Österreichischen Fregatte Novara Um Die Erde, in Den Jahren 1857, 1858, 1859., Wien, C. Gerold's Sohn, 1864 -1866, 1861-3.
<https://www.biodiversitylibrary.org/bibliography/9173> Last access June 6 2022
- Sennett R and Oram, H.J.: The Marine Steam Engine. Longmans Green and Co., London., 1899..Extracts online at <https://www.naval-history.net/WW0Book-Sennett-MarineSteamEngine.htm#1> Last access 6 June 2022
- 1650 Siemens, C.W.: On a Deep Sea Electrical Thermometer., Proc. R. Soc.London, 34, pp. 89-95, 1882.
- Smith, E.J.: ‘Cleanse or Die’: British Naval Hygiene in the Age of Steam, 1840–1900 [Med Hist.](#) 2018 Apr; 62(2): 177–198. doi: [10.1017/mdh.2018.3](https://doi.org/10.1017/mdh.2018.3) [Elise Juzda Smith](#) *,2018.
- Smith, E.J.: Raising Boys for the Navy: Health, Welfare, and the British Sea Services, 1870-1905. J. Hist. Med. Allied. Sci., 76, pp53–77. <https://doi.org/10.1093/jhmas/jraa054> 2021. Last access 14 June 2022.
- 1655 Sperberg, U.: Eduard Heis, an early pioneer in meteor research., Hist. Geo Space Sci., 12, 163–170.
<https://doi.org/10.5194/hgss-12-163-2021>, 2021.
- Spry, W.J.J.: The Cruise of Her Majesty's Ship "Challenger". Voyages over many seas, scenes in many lands., Sampson Low, Marston, Searle, & Rivington, London., 1876.
- 1660 <https://www.biodiversitylibrary.org/bibliography/112294> Last access 6 June 2022.
- Theberge, A.E.: George Belknap and the Thomson Sounding Machine., Hydro International Magazine, 2014. <https://www.hydro-international.com/content/article/george-belknap-and-the-thomson-sounding-machine> Last access 6 June 2022.
- Thurston, R.H.: Obituary notice, Charles William Siemens., Proc. R. Soc, London. 37(49), 1884
- 1665 <https://royalsocietypublishing.org/doi/pdf/10.1098/rspl.1884.0002> Last access 6 June 2022.
- Tizard, T.H.: Contribution to the Meteorology of Japan. Meteorological Committee, Her Majesty’s Stationery Office, London, 24pp., 1876.
- Tizard, T.H., Moseley, H.N., Buchanan, J.Y. and Murray, J.: Narrative of the cruise of HMS Challenger with a general account of the scientific results of the expedition. Report on the Scientific Results of the Voyage of HMS Challenger During the Years 1873–76 Under the Command of Captain George S. Nares, R.N., F.R.S. and the Late Captain Frank Tourle Thomson, R.N. Wyville Thomson, C. and J. Murray (series eds.) Vol. 1. Edinburgh: Neill and Company. Pp. 1–1172., 1885.
- 1670
- 1675 Tizard, T.H., Moseley, H.N., Buchanan, J.Y. and Murray, J.: Report of the Scientific Results of the voyage of HMS Challenger During the Years 1873–76 Under the Command of Captain George S. Nares, R.N., F.R.S. and the Late Captain Frank Tourle Thomson, R.N. Wyville Thomson, C. and J. Murray (series eds.) Vol. 1 Part 1. Her Majesty’s Stationery Office. 1110 pp. ,1885.

<http://www.19thcenturyscience.org/HMSC/HMSC-Reports/1885-Narrative/htm/doc.html>

1680

Last access 6 June 2022.

Tucker, M.J.: A wave-recorder for use in ships., Nature, 170, 657-659, 1952.

von Tirpitz, A.: My Memoirs. Dodd, Mead and Co, New York. Not so Noble Books. Kindle Edition., 1919.

1685

von Willemoes-Suhm, R.: Challenger-Briefe, 1872-1875. Mit einem Vorwort von Professor Kupffer, der Photographie des Verstorbenen und einer Darstellung seines Grab-Monumentes. Verlag von Wilhelm Engelmann, Leipzig., 180pp., 1877.

<https://www.biodiversitylibrary.org/bibliography/1777> Last access 6 June 2022.

Wenegrat, J.O., Bonanno, J., Rack,U., Gebbie, G.: A century of observed temperature change in the Indian Ocean. Geophys. Res. Lett.,49(13), <https://doi.org/10.1029/2022GL098217> , 2022

1690

Wild, J.J.: At anchor: a narrative of experiences afloat and ashore during the voyage of HMS Challenger, from 1872 to 1876. M. Ward and Co. London; Belfast. 198pp., 1878.

Winfield, Rif.: British Warships in the Age of Sail 1817–1863: design, construction, careers and fates Seaforth Publishing, 414 pp. ISBN 978-1848321694, 2014.

Wyville Thomson, C.: The Depths of the Sea, MacMillan and Co London. 523pp., 1873.

1695

Wyville Thomson, C.: The voyage of the "*Challenger*": the Atlantic: a preliminary account of the general results of the exploring voyage of HMS "*Challenger*" during the year 1873 and the early part of the year 1876 Harper and Bros, New York. 2 vols. 391 and 340pp., 1878.

Zimmermann, A.: Anthropology and Antihumanism in Imperial Germany. University of Chicago Press. 364pp. ISBN 0-226-98341-2, 2001.

1700

Annex 1 Port calls and survey areas

Atlantic outbound					
Challenger			Gazelle		
Port	Dates	Days	Port	Dates	Days
Portsmouth Sailed	21 Dec 1872		Kiel Sailed	21 Jun 1874	
Lisbon	3-12 Jan 1873	9	Plymouth	28 Jun – 3 Jul 1874	5
Gibraltar	18-26 Jan 1873	8	Madeira	15-16 Jul 1874	1
Madeira	2-5 Feb 1873	3	Cape Verde	27-30 Jul 1874	3
Teneriffe	7 - 10 Feb 1873 13-14 Feb 1873	3 1	Monrovia	4-7 Aug 1874	3
St Thomas W.I.	16-24 Mar 1873	8	Ascension Is	18-19 Aug 1874	1
Bermuda	4-21 Apr 1873	14	Kongo	2-5 Sept 1874	3
Halifax	9-19 May 1873	10	Cape Town, South Africa	26 Sep -3 Oct 1874	7
Bermuda	31 May 13 Jun 1873	13			
Azores, Horta	1-2 Jul 1873	1			
Azores, Ponta Delgada	4-9 Jul 1873	5			
Madeira	16 - 17 Jul 1873	1			
Cape Verde	28 Jul 9 Aug 1873	12			
St Paul Rocks	28 – 29 Aug 1873	1			
Fernando Noronha	1-3 Sep 1873	2			
Bahia	15-25 Sep 1873	10			
Tristan da Cunha	15-18 Oct 1873	3			
Simonstown, South Africa	28 Oct -17 Dec 1873	50			

Indian/Southern Oceans					
Port	Dates	Days	Port	Dates	Days
Leave Simonstown	17 Dec 1873		Leave Cape Town	3 Oct 1874	
Prince Edward/ Marion Is	26-27 Dec 1873	1	Crozet	18/-9 Oct 1874	1
Crozet	31 Dec 1873- 3 Jan 1874	3	Kerguelen	26 Oct 1874 5 Feb 1875	103
Kerguelen	7 Jan 1 Feb 1874	15	Mauritius	26 Feb – 15 Mar 1875	18
McDonald Is Heard Is	6- 27 Feb 1874	21	Mermaid Str. Australia	27 Apr 1875	1
Melbourne	17 Mar- 1 Apr 1874	15			

Pacific					
Port	Dates	Days	Port	Dates	Days
Leave Melbourne	1 Apr 1874		Leave Mermaid Strait	27 Apr 1875	
Sydney	6 Apr - 8 Jun 1874	63	Koepang	14-26 May 1875	13
Wellington	28 Jun - 6 Jul 1874	8	Atapopa	27-28 May 1875	2
Kermadec	13 -17 Jul 1874	4	Amboina	2-11 Jun 1875	10

Tonga	19-22 Jul 1874	3	New Guinea Bismarck Archipelago	15 Jun – 11 Aug 1875	56
Fiji	24Jul – 11 Aug 1874	18	Solomon Is	24-29 Aug 1875	5
New Hebrides	17-19 Aug 1874	2	Brisbane Aus	26 sep-20 Oct 1875	24
Raine Is	31 Aug 1874	1	Auckland NZ	29 oct 11Nov 1875	13
Cape York	1-8 Sept 1874	7	Fiji	23 Nov 1875	
Aru Is	14 - 23 Sept 1874	9	Tonga	8- 20 Dec 1875	12
Ki Is	24-26 Sept 1874	12	Samoa	24 28 Dec 1875	4
Banda Is	29 Sept 2 Oct 1874	3	Magellan Strait	1 Feb 1876	
Amboina	4 -10 Oct 1874	6			
Ternate Moluccas	15-17 Oct 1874	2			
Samboangan Philippines	23-26 Oct 1874	3			
Ilo Ilo	28-31 Oct 1874	3			
Manila	4-11 Nov 1874	7			
Hong Kong	16 Nov 1874 - 6 Jan 1875	51			
Manila	11-15 Jan 1875	4			
Zebu	18-24 Jan 1875	6			
Camiguin Is	26 Jan 1875	1			
Samoangan	29 Jan-5 Feb 1875	7			
Humboldt Bay NG	22 -24 Feb 1875	2			
Admiralty Is	3-10 Mar 1875	7			
Japan	11 Apr -16 Jun 1875	66			
Sandwich Is Hawaii	27 Jul - 19 Aug 1875	23			
Society Is Tahiti	18 Sept -3 Oct 1875	15			
Juan Fernandez	13-15 Nov 1875	2			
Valparaiso	19 Nov-11 Dec 1875	22			
Magellan Strait	31 Dec 1875 -20 Jan 1876	21			

1705

Atlantic Homeward					
Challenger			Gazelle		
Port	Dates	Days	Port	Dates	Days
Leave Magellan Str	20 Jan 1876		Leave Magellan Str	1 Feb 1876	Days
Falkland Is	23 Jan -Feb 6	14	Punta Arenas	6 - 8 Feb 1876	2
Montevideo	16- 25 Feb	9	Montevideo	16-19 Feb 1876	3
Ascension Is	27 Mar – 3 Apr	7	Azores	10-12 Apr 1876	2
Cape Verde	17-26 Apr	9	Plymouth	15-20 Apr 1876	5
Vigo	2 May	1	Kiel	28 Apr 1876	
Spithead	24 May	1			

Annex 2 Translation of the Contents list of *Gazelle* Reports

**Volume 1.
Travelogue**

1710		Pages	
	Chapter I	Prehistory, purpose and organization of the expedition	1-9
	Chapter II	Commissioning and fitting out of SMS "Gazelle"	10-30
	Chapter III	Sailing orders and research instructions	30-47
1715	Chapter IV.	From Kiel to the Congo	48-62
	Chapter V	The Congo	63-72
	Chapter VI	From the Congo to Kerguelen	72-79
	Chapter VII	The Kerguelen Islands	80-133
	Chapter VIII	From Kerguelen to Amboina	135-159
1720	Chapter IX	From Amboina to the MacCluer Gulf, New Guinea	159-185
	Chapter X	From New Guinea to New Hannover (Lavongai)	185-199
	Chapter XI	New Hannover	199-223
	Chapter XII	Mecklenburg	223-239
	Chapter XIII	From New Pommern (New Britain) to Brisbane	239-258
1725	Chapter XIV	From Brisbane to Samoa	258-276
	Chapter XV	The homeward voyage from Apia via the Straits of Magellan to Kiel	277-28
	Appendix I	Summary of anthropological research on the voyage of SMS Gazelle	288-301
1730	Appendix II	The expedition to the Auckland Islands	302-307

-----ooooOOOOoooo-----

**Volume 2
Physics and Chemistry**

1735		Pages	
1740	Chapter 1.	Deep-sea explorations, water temperature measurements, current determinations and observations of the color and transparency of the seawater carried out during the research trip of SMS "Gazelle". Edited by Captain Lieutenant a. D. ROTTOK	1- 46
1745	Chapter 2.	Specific weight and salinity of seawater according to the measurements made on water samples from the S. M. S. "Gazelle" expedition Edited by Professor Dr. G. KARSTEN	47-60
	Chapter 3.	Chemical analysis of the SMS "Gazelle" collected seawater samples. Edited by Professor Dr. O. JACOBSEN	61-68
1750	Chapter 4.	The mineralogical-geological condition of the seabed deposits collected on the research trip of SMS "Gazelle" Edited by Oberbergdirektor Dr. by GUEMBEL in Munich	69-116
1755	Chapter 5.	The tide observations at Kerguelen, Betsy Cove. Edited by Professor Dr. BORGEN	117-127
	Chapter 6.	Wave observations carried out on board S. M. S. "Gazelle". Edited by Capt. Lieutenant a. D. ROTTOK	128-134

1760	Chapter 7. The Magnetic Observations. SMS "Gazelle". Edited by Professor Dr. BÖRGEN	135-195
1765	Chapter 8. Geomagnetic and tidal observations on the Auckland Islands (Terror Cove, Port Ross). Processed by Professor Dr. BÖRGEN	196-216
	Chapter 9. The Pendulum Observations on the Kerguelen and Auckland Islands. Edited by Professor Dr. C.F.W. PETERS	217-265

1770
-----ooooOOOOoooo-----

Volume 3
Zoology and Geology

1775
Foreword

Section I

	From Plymouth to Capetown	1-55
1780	1. Surveys of the coast of Madeira	1
	2. The Cape Verdes	8
	3. Investigations on the west coast of Africa	17
	4. Visit to Liberia	33
	5. Visit to Congo	36
1785	6. Visit to Ascension Island	43
	7. Visit to the Cape of Good Hope	51

Section II

	Kerguelen	56-174
1790	A. Geology	59
	1. From Christmas Harbor to the Observation Peninsula	60
	2. The Observation Peninsula	67
	3. Mount Crozier	80
1795	4. Low Peninsula	80
	5. Royal Sound	81
	General Results	84
	B. Zoology	86
	1. Higher vertebrates, terrestrial and freshwater dwellers	87
	Mammals	88
1800	Birds	92
	Embryonic development of the bird	107
	2. Invertebrates	124
	Land dwelling	125
	Freshwater dwelling	130
1805	General observations on the terrestrial fauna	131
	3. Marine Fauna of Kerguelen	135
	1. Low tide beach	136
	2. Florida Zone	138
	3. Mud bottom zone.	142
1810	List of marine animals known to date	150
	General considerations on the marine fauna	167

- 1865 3. Mushrooms and lichens
 A. Mushrooms processed by Baron FELIX v. THÜMEN
 B. Lichens processed by Prof. Dr. A. MÜLLER in Geneva
4. Liverworts (Hepaticae) based on the preparatory work carried out by Dr A.C.M. GOTTSCHÉ edited by Dr V. SCHIFFNER. With 8 figures
- 1870 5. Mosses processed by Dr KARL MÜLLER in Halle.
 6. Ferns (Filicinae) and clubmoss-like plants (Lycopodinae) processed by Dr M KUHN with 3 figures.
 7. Siphonogams (Phanerogamen) processed by Prof. Dr. A ENGLER with 15 figures.

-----ooooOOOOoooo-----

1875

Volume 5

METEOROLOGY

		Page
1880	1. Meteorological observations on board SMS <i>Gazelle</i> during the voyage from June 1874 to April 1876	1
	2. Anemometer measurements on board SMS <i>Gazelle</i> .	156
	3. Observations of the specific gravity and temperature of the surface waters	189
	4. Meteorological observations on the island of Kerguelen (Betsy Cove)	219
1885	5. Meteorological observations on Auckland Island (Terror Cove)	268-282

Annex 3

International contributors to the Challenger expedition reports

1890 (Nationalities are those of the institutions in which the contributors worked at the time)

The reports are available online at <https://www.biodiversitylibrary.org/bibliography/6513>

Contributions are to the zoology reports unless otherwise stated

1895

Austria Ludwig **von Graff**
Belgium Paul **Pelseneer**, Rev Alphonse Francois **Renard** (*Sediments*),
Denmark Rudolph **Bergh**
Germany Albert **Günther** (British- born Germany), Ernst **Haeckel**, Richard Hertwig, Franz Eilhard

1900

Schulze, Emil **Selenka**, Theophil **Studer**, Otto von **Linstow**, Albert **von Kölliker** (born Switzerland)

Ireland Daniel John **Cunningham**, Alfred Cort **Haddon**, William Johnson **Sollas**

Italy Francesco Castracane **degli Antelminelli** (*Botany Diatomaceæ*)

Netherlands Paulius Peronius Cato **Hoek**, Ambrosius Arnold Willem **Hubrecht**

1905

Norway Georg Ossian **Sars**

Russia Nikolai Nikolaevich **Poléjaeff**

Sweden Hjalmar **Théel**

USA Alexander **Agassiz**, W.K. **Brooks**, Theodore **Lyman III**